

OUTPOST

MONTHLY MAGAZINE OF THE BRITISH CLUB

SEPTEMBER 1986



CONTENTS

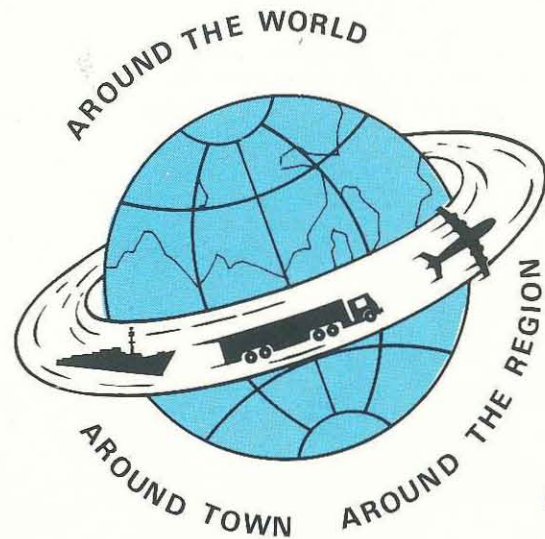
From the Editor	3
Diary	7
Jingjck	9
Letters	11
Club Roundup	
: Up-Coming Extraordinary General Meeting (S)	17
: Managers Report	23
An Introduction to Thai Art	25
Trafalgar Night	27
Hardening up on tissue sales	29
Sports Roundup	33
Reciprocal Clubs	45
Membership Matters	46
Status of Membership	46
Activities	48

S:

85
9
5
1

HONG KONG TRANSPACK CO., LTD.

Thailand's Leading International Home Furnishings and Personal Effects Packers and Shippers



Members of:

- Household Goods Forwarders Association of America
- National Moving & Storage Association
- FIATA
- Latin American & Caribbean Movers Association
- International Federation of Furniture Removers (F.I.D.I.)
- Far East Movers Association

Agents for:



Atlas Van Lines International



THE HIGHEST QUALITY SERVICE AT THE MOST ECONOMICAL PRICE.

For over 28 years Hong Kong Transpack has been providing that special service to thousands of families just like yours. And whether your goods are moved by sea or air, to a major world capital or one of those out-of-the-way places, trust the Leader to take more care.

Call us -- your personal agents -- and experience the difference:

**Kenneth E. Cook
Kouhn Voraraj
Jenny Sim**

Tel: 259-0085-90 / 258-6676 / 258-5281

International Office:

Hong Kong Transpack Co., Ltd.
59/44 Soi 26, Sukhumvit Road,
Bangkok, Thailand.
Telex: TH 84272 HKPACK
Cable: HONKONGPAK BANGKOK

Chiang Mai Regional Office:

Hong Kong Transpack Co., Ltd.
164/56-57 Changklarn Road,
Chiang Mai, Thailand.
Tel: (053) 251-396, 251-454
Telex: TH 84272 HKPACK
Cable: HONKONGPAK BANGKOK

CONTENTS

From the Editor	3
Diary	7
Jingjck	9
Letters	11
Club Roundup	
: Up-Coming Extraordinary General Meeting (S)	17
: Managers Report	23
An Introduction to Thai Art	25
Trafalgar Night	27
Hardening up on tissue sales	29
Sports Roundup	33
Reciprocal Clubs	45
Membership Matters	46
Status of Membership	46
Activities	48

S:

8
85
9
5
1

Allowrie CHEESE



Cheddar Cheese and Cheese Slices
Fine Australian cheese for delicious sandwiches, cheeseburgers and many tasty dishes.

Mild Cheddar Cheese

The perfect choice for a snack at anytime or a memorable wine and cheese party.



"Allowrie" BUTTER

Enjoy its rich, creamy flavour with every meal.

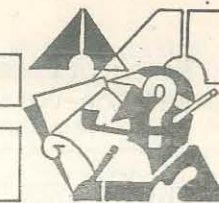
Also available in 5 kg. economy packs for bakeries and restaurants.

Sole Distributor:

KIM CHUA TRADING LTD., PART.

3059, 3059/1-3 Sukhumvit Rd. Bangkok 10260.
Tel. 311-2129, 311-4821, 311-4912

From THE EDITOR



Rumour has it that the Outpost Editor is back in town but is refusing to have anything to do with us until she has her army of scriptwriters, artists and printsetters back with her as well. Apologies then for another cobbled-together flimsy holiday edition - watch out for a slick bumper edition next month.

With lots of blank pages facing us I thought I would again avail myself of the opportunity to dwell on issues concerning the Committee and the well-being of the Club and in particular I draw your attention to the article after this which announces Extraordinary General Meetings to be called on 21st October and, hopefully, 2nd December.

Many people are asking me whether Mr. Jingjok's recent tirades are for real or not and whatever the answer to that question is it was certainly not revealed by a survey we have just done of Club Membership and Usage during the first half of 1986. However the survey has provided us with a much better understanding of how our membership is currently made up and which groups are and are not making use of the Club at the present time. This will be invaluable in developing our policies and we thought that Outpost readers as a whole may be interested in some of the findings.

What we have done has been to analyse all Members' usage of the Club over the first 6 months of 1986 including all new members who joined up to the beginning of June but excluding all who resigned or went absent since January 1st. The total sample was 462 Members and usage was calculated as average monthly expenditure over and above the monthly subscriptions which we all pay. Usage by Membership category was as follows:

CATEGORY	MEMBERS	%	AVERAGE Exp/Month	TOTAL Expenditure	%
Ordinary & Non-Voting	347	75	฿ 1,450	฿ 503,262	85
Associate	59	13	฿ 882	฿ 52,029	9
Ladies Privileges	35	8	฿ 1,025	฿ 30,767	5
Up Country	21	5	฿ 392	฿ 8,235	1

TOTAL 462 100 ฿ 1,286 ฿ 594,293

No surprises here. The bulk of our Membership are Ordinary and Non-Voting. They spend the most, B 1,450 per month, and contribute 85% of the Club's income.

This is how our Married and Single Members compare:

MEMBERS (excluding UP-COUNTRY)	NO.	%	AVERAGE Exp/Month	TOTAL Expenditure	%
Married	330	75	B 1,435	B 473,591	81
Single	111	25	B 1,013	B 112,467	19

TOTAL 441 B 1,328 B 586,058

Bang goes any suggestion that it's the bachelors who keep us going! Although we have a lot of faithful single supporters, Married members as a group represent 75% of the Membership and spend 40% per month more on average than their Single friends. (Wonder where they spend their money!)

And how about the 'Old Guard'/'New Guard' debate, whatever that is all about?

This is how our Membership is made up and what the spending power is of each generation:

DATE Joined	MEMBERS	%	AVERAGE Exp/Month	TOTAL Expenditure	%
Before 1957	4	1	B 199	B 759	-
1957-1959	3	1	B 444	B 1,232	-
1960-1962	2	-	B 1,113	B 2,226	1
1963-1965	5	1	B 2,110	B 10,551	2
1966-1969	6	1	B 1,063	B 6,382	1
1970-1971	12	3	B 995	B 11,944	2
1972-1974	16	4	B 1,196	B 19,135	3
1975-1977	22	5	B 1,215	B 26,742	5
1978-1980	69	15	B 1,155	B 79,722	14
1981-1983	86	19	B 1,121	B 96,446	16
1984-1986	224	50	B 1,496	B 336,642	57

449 B 1,286 B 586,223

(At the time of the survey 13 members' records were missing information on the date of joining)

The staggering feature here of course is that 50% of our membership joined in the last 2½ Years from 1st January 1984. Members joining since 1978 represent 84% of the total. Although there are loyal users of the Club from all generations it is the new members as a group who use the Club most. 87% of income comes from Members joining since 1978.

The vast majority of members did use the Club on at least one occasion during the six month period - in fact we found only 8 with no bills at all. This is the overall situation:

EXPENDITURE/MONTH (BAHT)	MEMBERS	%
0	8	2
0 - 499	149	32
500 - 999	76	16
1000 - 1999	121	26
2000 - 2999	64	12
3000 - 3999	28	6
4000 - 4999	8	2
5000 - up	8	2

The worrying thing here is that although everyone apparently knows where the Club is and presumably has seen what good shape it is in, a third of the membership spend less than B 500 a month in usage. It is important that we find out what we can do to make the Club more attractive and useful for this group. Even a modest boost in their activities would be very beneficial to the Club as a whole.

So, all has been revealed! The main conclusion to be drawn is that, like it or not, the British Club which was once an exclusive businessman's retreat is now a social club catering for families and sport as well as business needs. We have some faithful and loyal members of long standing but our turnover is rapid and the life-blood is the new family members.

And finally the roll of honour. The longest serving members -

E. Morris	Joined 1935
Sir James Holt	1938
P.D. Howard	1946

C. Hyland	1947
Mrs. Charles Stewart	1952
N. Overy	1952
A. Greenlees	1954
B. Thompson	1958
P. Dickson	1959
P. Speed	1959
M. Blackburn	1960
K. Pope	1960

This group deserves our special thanks and appreciation for their long allegiance. Our membership records are not in great shape for the earlier years. If you know of any omission or mistakes in this list please let us know and we will republish a revised list.

We have also pulled off a list of the Club's top 20 users (no. Peter Hewland is not numberone!). We did consider publishing the list as an incentive for all those who might respond to such a challenge, but decided not to in the interests of preserving marital relationships. The list is available for inspection for anyone with justifiable fear that they may be on it. It includes 12 members who joined since 1984. 17 are ordinary married members, 1 a single ordinary member, 1 a non-voting married member and 1 a married associate member. 3 committee members are especially commended for making the list since Happy Hours on Committee Meeting Nights were deliberately designed to prevent this.

Jack Dunford.
Chairman.

DIARY



MON	1	Committee Meeting New Members Night Happy Hour Men's Tennis Club Night Ladies Tennis	6.00pm 7.30pm 5.30 - 9.30pm 6.00pm 3.00pm
TUE	2	Yoga Ladies Squash Bridge	8.30am 9.30am 7.30pm
WED	3	Tennis & Squash Club Night	6.00pm
THU	4	Ladies Tennis	8.30am
FRI	5	Yoga	8.30am
SAT	6	Dinner Video	6.00 & 8.00pm
SUN	7	Dinner Buffet	6.00pm
MON	8	Ladies Tennis Happy Hour Men's Tennis Club Night	3.00pm 5.30 - 9.30pm 6.00pm
TUE	9	Yoga Ladies Squash Bridge	8.30am 9.30am 7.30pm
WED	10	Tennis & Squash Club Night	6.00pm
THU	11	Ladies Tennis	8.30am
FRI	12	Yoga	8.30am
SAT	13	Dinner Video	6.00 & 8.00pm
SUN	14	Dinner Buffet	6.00pm
MON	15	Committee Meeting Happy Hour	6.00pm 5.30 - 9.30pm

	Ladies Tennis	3.00pm
	Men's Tennis Club Night	6.00pm
TUE 16	Yoga	8.30am
	Ladies Squash	9.30am
	Bridge	7.30pm
WED 17	Tennis & Squash Club Night	6.00pm
	Rugby Night	6.30pm
THU 18	Ladies Tennis	8.30am
FRI 19	Yoga	8.30am
SAT 20	Dinner Video	6.00 & 8.00pm
SUN 21	Swimming Gala	12.00am
	Dinner Buffet	6.00pm
MON 22	Ladies Tennis	3.00pm
	Happy Hour	5.30 - 9.30pm
	Men's Tennis Club Night	6.00pm
TUE 23	Yoga	8.30am
	Ladies Squash	9.30am
	Bridge	7.30pm
WED 24	Tennis & Squash Club Night	6.00pm
THU 25	Ladies Tennis	8.30am
FRI 26	Yoga	8.30am
SAT 27	Dinner Video	6.00 & 8.00pm
SUN 28	Dinner Buffet	6.00pm
MON 29	Ladies Tennis	3.00pm
	Happy Hour	5.30 - 9.30pm
	Men's Tennis Club Night	6.00pm
TUE 30	Yoga	8.30am
	Ladies Squash	9.30am
	Bridge	7.30pm



Jingjok

An open letter to J. Dunford, Esq. Chairman

Dear Sir,

You have finally gone too far. My patience is exhausted.

First. I learn that you are set upon making a fundamental change to the rules of this Gentlemen's Club. At one stroke this will destroy forever its unique character, and will wreck the social balance so wisely established by the Club's founders in the year 1910. Mr. Dunford. Your foolish desire to allow women to become members confirms my worst years about you. You are recklessly irresponsible, you have no sense of tradition and you respond mindlessly to those who pull your apron strings.

Secondly. I am disgusted by the alacrity with which the sheep-like junior members are dancing to your moronic tune. Furthermore, their ill-mannered outbursts of support for the crazy schemes of the wild bunch are no longer acceptable to me. The other evening in the Churchill Bar I suffered the indignity of being abused by one of your appalling acolytes who overheard me expressing my views in a private conversation with two other reasonably-minded British gentlemen. This grossly offensive person concluded his brief exchange by calling me a "reactionary old fart". As a respected member of many years' standing I will not accept such an outrageous insult.

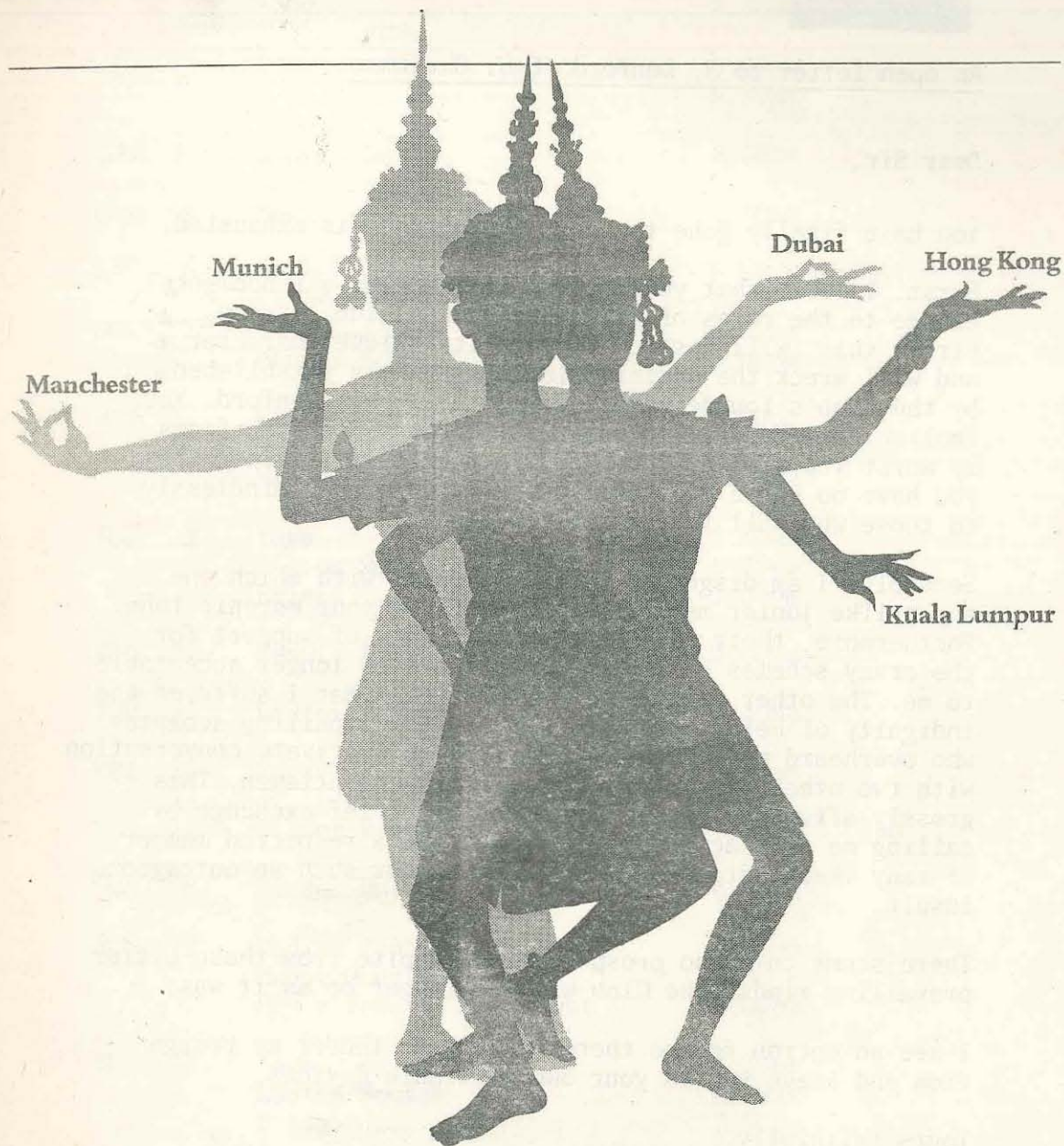
There seems to be no prospect of a respite from these bitter prevailing minds. The Club will no longer be as it was.

I see no option for me therefore but to tender my resignation and leave you to your own miserable devices.

Yours faithfully.

Jingjok

We now fly direct in five new directions.



You can now fly direct to all these five new destinations on our twice weekly service.

Add that to our popular direct flights to London and Bahrain and you've got the kind of service that makes us the world's favourite airline.

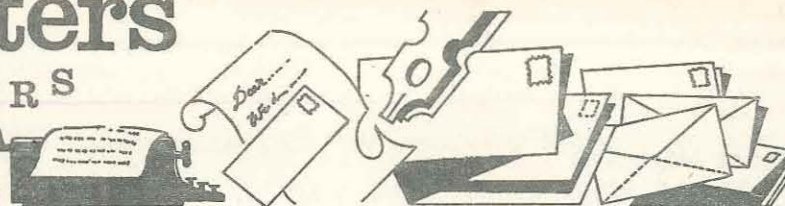
BRITISH AIRWAYS
The world's favourite airline.

Letters

LETTERS

Letters

LETTERS



Dear Sir,

Would you please take your correspondent Mr. Jingjok aside seat him comfortably in his rocking chair, and break to him a piece of intelligence which he has evidently missed, and which will undoubtedly cause him considerable distress. I refer of course to the fact that Queen Victoria is dead.

Yours faithfully,

TOOKAY

5th August

The Editor.
Outpost Magazine
The British Club
BANGKOK

Dear Sir.

When I read Jingjok's letter in your June issue. I took it as a "one-off" effort meant to amuse, albeit a little pompous and Colonel Blimpish. His next offering (July) left me wondering "What is the man about...?" His 3rd, 4th & 5th epistles, all published in August (surely a record). I found a bit of a bore.

All this talk of Senior Members, junior members, regular members, new members, current members, privileged insiders, not-so privileged outsiders (whomever they are - keep the bounders out), free loaders, women and, Lord forgive us, Americans, leaves me, Sirs, most confused and embarrassed. Do I tell potential candidates and friends that they are not welcomed at the British Club? Or should I first seek the blessing of Lord Jingjok before entering the hallowed halls of the Churchill Bar? Talking of Americans, Churchill was half American. Were Sir Winston alive, would he be an insider or an outsider?

Obviously, Lord jingjok rates himself as a "Senior Member" and apparently believes that he and other "Elders" of The Club should, because of their seniority as long-standing Members, be first consulted before any decision or action is taken by the Committee.

I have always been one to respect my seniors, provided they are worthy and deserving of respect. I would support a move to recognize and elevate such long-serving Members to Senior Members status. They could have their own private bar-stools with their names engraved on little brass plates. At least, then junior Members and outsiders could avoid the social error of sitting on a reserved seat. Furthermore, one of the rooms could be fitted out into a private bar & lounge for the exclusive use of Senior Members - sort of a Masters' Common Room.

Pending acceptance of such a proposal, it is fitting to remember it is the British tradition that The Commons rules, not The Lords. Although I believe, advice and constructive suggestions will always be gratefully acknowledged.


And so it is with the Committee. They have been duly elected, and should be given every support in what is proving to be a difficult and rather thankless job.

Finally, Sirs, let us call a halt to this business of who is more equal among equals, "blue-bloods" viz-a-viz "red-bloods" etc. I confess to having the very common red variety which have served me well these past 50 years and more.

Thanking You.

I remain, Sirs,

Your most humble new (less than a year) and "junior" Member.


(W.H. Godwin) - G39

FITNESS 
INTERNATIONAL
PROFESSIONAL FITNESS CENTERS

DUSSIT THANI HOTEL, RAMA IV ROAD, BANGKOK 10500, THAILAND
TEL. 233-1130 EXT. 2575

August 13, 1986

Mr. D.C. Williamson
Manager British Club
189 Suriwongse Road
BANGKOK 10500

Dear Mr. Williamson,

A number of British Club Members, especially in the Soccer and Rugby sections have expressed an interest in joining Fitness International, Bangkok.

I would like to propose the following discount on the entry fee to all members which will be available up to and including 31st September 1986.

REGULAR MEMBERSHIP

Normal Entry Fee	฿ 6.000
British Club Members	฿ 1.600 (฿ 4.400 discount)
Monthly Fee	฿ 725 (No discount)

JOINT MEMBERSHIP (Husband & wife)

Normal Entry Fee	฿ 9,500
British Club Members	฿ 3,000
Monthly Fee	฿ 1,200 (No discount)

I have enclosed a number of brochures and a letter to the members which you might like to place on the notice board of the British Club.

I am most happy to meet you and discuss this proposal at your earliest convenience.

Yours for better fitness.



Craig Scott
Director

Commander J.E.K. Ellis, Royal Navy



HMS AMAZON
BFPO Ships

506/10/9
Mr. J.E. Dunford
The Chairman
The British Club
189 Suriwongse Road
Bangkok

29 Jul 86

Dear Jack.

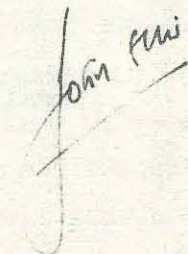
I am writing to thank you and all the members of the British Club for all the hospitality offered so generously during HMS AMAZON's visit to Bangkok.

There is no doubt that the Games Challenge Night was one of the highlights of our visit and was thoroughly enjoyed by all who attended. The Rugby team were most grateful for the game and enjoyed it all the more in view of the final score!

It was especially appreciated that we were looked after so well during the election days when most of Bangkok was closed and all who visited your club commented on the friendly and enthusiastic welcome that they received there.

Once again, thank you for helping to ensure that our visit to Bangkok was so memorable and enjoyable.

A bientôt,



The Bangkok St. Andrew's Society



G.P.O. Box 18
Bangkok.

21st August 1986

The Editor
Outpost
c/o The British Club
189 Surawongse Road
Bangkok.

Dear Sir

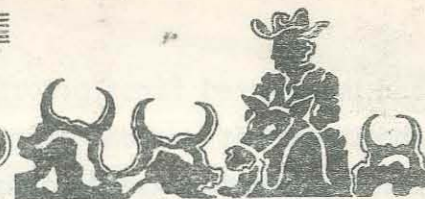
Another Ceilidh

I would be grateful if you could publish this letter in the next edition of Outpost to announce that the Bangkok St. Andrew's Society will be organising a ceilidh on the 17th October; this time at the Shangrila Hotel. As with other ceilidhs in the past two years this will not be restricted to members of our Society but will be open to other members of the British Club who will be welcome. More details will be announced nearer the date but in the meantime any members who are interested can keep that evening free. For those members as of yet unfamiliar with this type of event it is a light-hearted evening of entertainment (provided, we hope, by Society members) combined with good food and spirits.

Yours faithfully,

P.G.A. Buckland
Committee Member with Ceilidh Portfolio

CLUB ROUNDUP



UP-COMING EXTRAORDINARY GENERAL MEETING(S)

The General Committee has decided to call an Extraordinary General Meeting to consider two ordinary and one special resolution on 21st October. This will be followed by a second Extraordinary Meeting on 2nd December if the special resolution is passed at the first meeting. Formal notification and the exact motions will be sent out in due course but I thought it would be useful to give a general explanation of our intentions at this stage. It also gives you early notice to put these dates in your diary to ensure your attendance.

As mentioned last month, the Club is currently repaying a loan of approximately 2½ million baht which was raised in 1985 to carry out a number of repairs and improvements to the Club premises including the all-weather floodlit tennis courts, the new Suriwongse sala, and damp-proofing and refurbishment of the Club House Kitchens and Snooker Room. This loan is a fairly normal one for the Club in recent history amounting to only ฿ 5000 per member.

However, Membership has been steady at around 500 for several years now and income has not increased in line with increasing operating costs. At the time this current committee took office income levels were not adequate to cover on-going costs and the loan repayment schedule. The Committee has had to address this issue with some urgency

and has placed first priority on increasing Club Membership and Usage. It has endeavoured to advertise Club Membership more aggressively and to make the club a friendlier and more welcoming place. As stated last month, if membership could be increased to over 550 and/or Members could be induced to spend B 100 per week more than the current cash/flow problem would be resolved.

In pursuing such a policy the committee is aware that if it fails then much tougher remedial action will be needed. If membership does not increase and usage of the club does not improve then the club will face a serious cash/flow problem which will have to be tackled by much tougher measures. The motions being put forward by the committee at the Extraordinary General Meeting are supportive of the current policy. By the end of this committee's term of office we would hope to be in a position to evaluate whether this policy has been or can be effective and, if not, to have alternatives defined.

I) The first motion is relatively minor. With a new emphasis on Associate Membership (now at an alltime high) the Committee feels that the privilege of absent membership should be extended to them in the same way as other membership categories. This has been requested by several distinguished Associates who have left Bangkok recently who wish to retain identity with Club, and to use it during visits to Bangkok or when they eventually come back to live here. The Committee feels that this is both in the best interests of the Club and fair to these Members who pay the same dues as Ordinary Members. If approved, Associates would retain absent Membership by leaving their Deposits at the Club in the same way as Ordinary Members. We hope that this will be a relatively uncontroversial issue.

II) Perhaps more controversially, the Committee feels that in promoting membership and usage the time is ripe to change the Club Rules to permit females to become Members of the Club. It is true that the Club was once an exclusive business gentlemen's retreat and that some Members would like to keep it that way. But to be realistic, as the survey has shown, the Club has already changed dramatically, and is now a Social Club catering for family, sport and business use alike. It is dependent very much on family membership and use. The Committee feels that by changing the Club Rules to allow female membership they will not only be given equal status to both use and contribute to the Club, but the Club will also throw off a negative image perceived by many outsiders and potential members. The motion supports our policy to encourage and develop Membership and usage.

A full explanation of our Motion and its implications will be given next month and we hope that this time we can avoid spurious side-issues which dominated discussion last time the matter was presented to the Membership. A motion on female membership was narrowly rejected as recently as 1984 but with less than 15 percent of the Club Membership present to vote. With 50% turnover in membership since that time the Committee feels well justified in presenting the issue again at this time, and whatever your feelings are we hope that there will be a large turnout to give a conclusive verdict one way or the other.

This will be a Special Resolution. If passed at the 21 October meeting by a simple majority (as happened in 1984) a second meeting will be called on 2nd December which must confirm the action with a two thirds majority (last time those in favour were 60%).

III) Whilst the Committee emphasis is on increased Membership and usage it feels that it must take some short term remedial measures to address the current cash/flow problem by increasing subscriptions and entrance fees.

The is done with reluctance. On the face of it, it may not make sense to put up entrance fees during a membership campaign, but these have not been increased since 1981 and are the lowest by far for equivalent Clubs in the Region (and probably in the World). Even with increased entrance fees the Club represents tremendous value.

Subscriptions were raised only last year (April 1985) but even at that time the Treasurer made it clear that the rates proposed were not adequate to fully address the Club's financial difficulties of that time. The fact is that the Club has been plodding on year by year without ever really tackling its longer term financial security. A subscription increase of around 10% will not solve our problems this time either but it will go part of the way (over 35 percent of our projected increased income requirements) and provide some cover as we pursue our other policies.

It must be emphasised that the long term future of the Club is a cause for concern. Our membership has not increased over the years whilst operating costs have increased; locationally the Club has become less convenient for the majority of members; competition from other Clubs and attractions in Bangkok has increased tremendously; and with membership turning over by 50% in just 2½ years we are now vulnerable to swings in the economic and investment climate in Thailand as never before. We believe that the situation can be addressed, at least in the short-term, by our measures to attract a wider membership and increased usage, but if we fail, the 'long term' may be just around the corner.

Besides the current remedial measures there is an urgent need, now, to look at ways of securing our financial position for once and for all rather than living in hope from year to year.

Fortunately the Club has a tremendous asset in the property it owns and many schemes have been mooted to utilise this in the past including redevelopment of part or all of the existing property with various degrees of commercial usage, and moving to a new location perhaps in conjunction with a new Patana School (possibly retaining an in-town business club facility). This kind of re-development or relocation is a solution which has been taken by several other clubs in the Region with similar problems to our own. They have achieved various degrees of success (and failure).

Our club has a long and distinguished history and quite rightly there is a good deal of sentiment and attachment to our present pleasant and well-appointed premises. However redevelopment in part or whole and/or relocation would provide us with a way of securing the club's future for once and for all and the Committee feels duty-bound to explore possibilities. Any such proposition would have to be very carefully planned and would only be presented to the membership if the committee was assured that members' interests were fully protected. Full discussion and debate by the membership would be essential. This will not be an issue for the Extraordinary General Meeting in October but is an issue under consideration by the committee as back up to its current policy.

I would conclude by saying once again that the Club's well being is very much in the hands of the membership. Relatively modest increases in usage and membership levels would remove

most of the pressure for increased subscription and prices. It is your club. Use it! If you have suggestions as how we can improve the club and make it more attractive for you then let us know.

Jack Dunford.



"Earnings are down again. Should we reorganize or find scapegoats?"

MANAGERS REPORT

Firstly, welcome back to all those members who went back for the British Summer (was it on a Tuesday or Wednesday this year?) and thanks to all of those who stayed and supported the club so well during the traditional "quiet period"

For those of you who have been away I thought I would just give you a brief up-date on what you've been missing. After many years of disrepair we eventually managed to find a company, prepared to don flippers and masks and replace all the broken tiles in the swimming pool. I think you will agree it's made a great improvement to the pool and additionally kept many of us amused watching the repair being carried out.

Following the re-furbishment of the ladies poolside changing rooms we thought it only fair to do the same for the brutes. At last the famous plastic curtain has been replaced by a proper wall, the furniture has all been re-stained and varnished, the water pump has been upgraded, new wash basins and shower fittings installed and the whole room has been re-painted. (sorry about the colour Dugal!)

Rising damp has been a problem in the Club-House for many years and nowhere more pronounced than the snooker room and the kitchen. After waiting six months for materials from abroad we are at present renovating both these areas. The process calls for the stripping of all plaster, laying of a damp course, re-plastering and decorating. My apologies to the snooker players for the interruption to play but I am sure it will be worth it once the snooker room is restored to its former glory. In addition to the rising damp renovation the snooker tables have now be re-covered and levelled. No excuse for bad play now so lets try and give Ron Armstrong a run for his money this year!

Good news for tennis players. We are just completing the construction of the missing grass court fence and filling in the muddy ditches. EUREKA NO MORE SOGGY BALLS! Additionally after many hours of tender loving care by Khun Yoryos and his ground staff the grass courts are in A 1. condition and deserve to be used, so why not brush the cobwebs of your old rackets and come down and support the tennis section?

In order to improve service and member/staff relationship

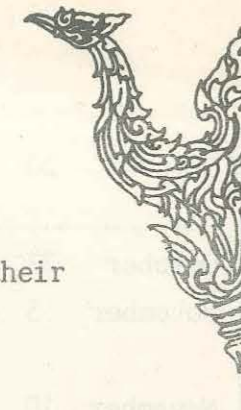
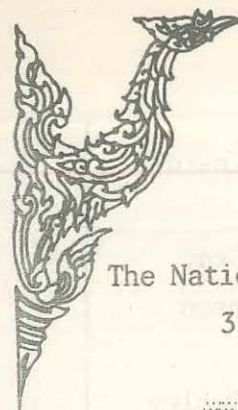
We have employed a company on a trial basis to teach the staff English and cultural mannerisms. You could help us by occasionally trying to talk to the staff rather than just at them. Even Khun Paitoon in the bar who after 15yrs at the British Club has managed to avoid speaking any English at all is now considering entering the next Oxford Union Debate!

Finally, a request. if you have any suggestions to improve any aspect of your club please let me know. Without feedback from the members its very difficult to keep abreast of peoples needs or dislikes. Increased usage of the club is now of paramount importance to the club's future and if I or the staff can do anything to make this a more desirable place to spend your time please let us know.

D.C. Williamson
Club Manager.



"You used to think I was mysterious, and now I'm just baffling."



The National Museum Volunteers announce their
31st Introductory Lecture Series

AN INTRODUCTION TO THAI ART

Place : Alliance Francaise. 29 South Sathorn Road
 Date : Monday evening - September 22 through
 November 17, 1986
 Time : 6.30 - 7.30 p.m.
 Price : Baht 400.- for the whole series
 (not including study trips)
 Baht 60.- for single lectures
 Half-price for students
 Registration : September 22 - 5.30 - 6.30 p.m.
 Study trips are coordinated with the lectures

DATE	LECTURE	SPEAKER
September 22	Gods and Guardians - Hindu Elements in Thai Art	Rita Ringis
September 29	The life of the Buddha and Evolution of the Buddha Image	Margot Weinmann
October 6	Mon Architecture and Sculpture	James di Crocco
October 13	Khmer Art in Thailand	Sarah McLean

October	20	The Art of Sukhothai and Lanna	Peta Mainardi
October	27	The Art of Ayutthaya	Janine Gray
November	3	The Art of the Bangkok Period	Ruth Gerson
November	10	Thai Temple Compound and Mural Painting	Eileen Deeley
November	17	Ceramic - Ban Chiang to Bangkok	Midori Sasaki

This course has been designed to provide a basic understanding of the history and art styles of Thailand. It is a MUST for all new residents of Bangkok, and it is also an excellent refresher course for those who already have some knowledge of Thai Art.

Each lecture will be illustrated with a comprehensive selection of slides and interesting study trips have been coordinated with the lectures.

The lectures will be given in English by members of the National Museum Volunteer Group, from several countries, who will share their knowledge of the various aspects and development of Thai art.

TRAFALGAR NIGHT

October 22nd 1986

Join with fellow historians and P.P's for the greatest stag night of the year.

Nelsons Address by :: Very Rear Admiral Frank " the lash " Rowland

The Frogs version by : Jean Claude Michel Pierre Dubonnet Alias " Le Petoman "

This event is orchestrated by the St. George Society, However all nationalities are invited to join us in celebrating this historic masterpiece.

Make a note in your diary. Invite your business clients and sign up at the B.C. front desk.



NOTICE TO ALL EXPATRIATES HEALTH COSTS

As overseas medical costs continue to escalate, more and more expatriates turn to the Exeter Hospital Aid Society for private medical protection.

This Friendly Society provides expatriates with hospital cover "tailor made" to their specific needs in their specific area of residence; this personal approach to private health can save £'s in annual subscription rates.

Cover extends to treatment anywhere in the world.

Other Special Features

Subscription rates are the same for everyone regardless of age. Comprehensive Family cover includes any number of children under 18 years of age.

New members 65 and under 75 years of age are accepted on payment of a once-only additional joining premium - thereafter normal rates apply and coverage continues up to any age. Membership renewal is guaranteed.

**SPECIALISTS
IN WORLDWIDE
PRIVATE MEDICAL
PROTECTION**

Send for your FREE Overseas Prospectus today

Name _____

My/Our ages are _____

Address _____

Post Code _____

Send coupon to: Exeter Hospital Aid Society,
c/o 605 Panavongs Building, 104 Surawong Rd.,
Bangkok, Thailand. Tel: 236-0283



SINCE 1927

HARDENING UP ON TISSUE SALES

KUALA LUMPUR : After the Islamic toilet, blessed by the Prime Minister's Department, the private sector has taken up the challenge and come out with an Islamic toilet paper. Scott Paper (Msia) Sdn Bhd has launched a toilet tissue called Hamama - Arabic for dove - targeted at the Malaysian Moslem market. Currently, Moslems use a wide variety of drying agents following toilet. Robert Vanderselt, Scott's managing director, solemnly said in a press conference.

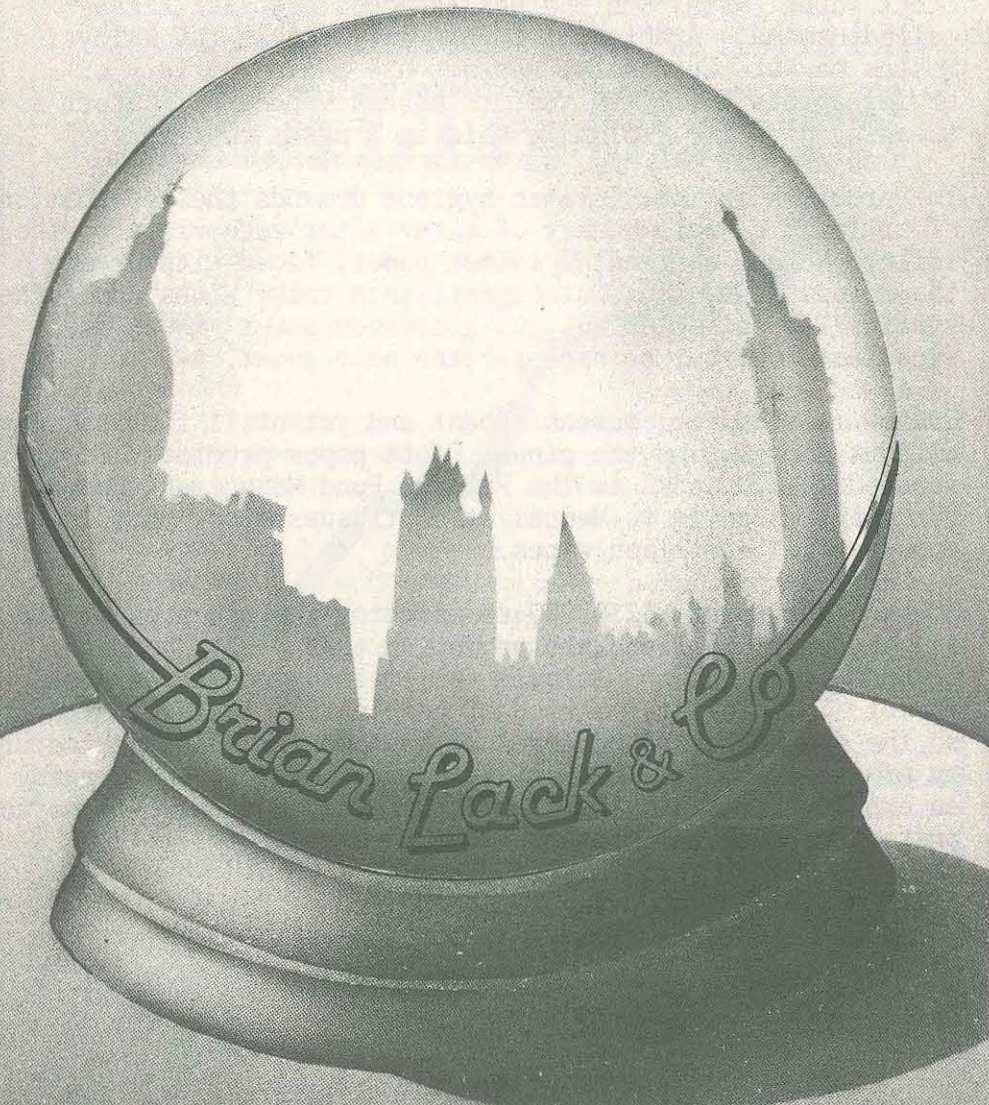
The problems is that Islamic hygiene demands the application of at least a small bucket of water after each visit to the toilet. Normal occidental toilet paper, faced with drying the deluge, tends to disintegrate into tacky blobs under the strain. Towels including your hostesses guest towel are excellent, but not so nice for the next guest.

Hamama is sturdier, more absorbent and yet still flushes away without clogging up the pipes, Scott paper promises. Scott donated 24,000 packs to the Pilgrim Fund Management Board for pilgrims going to Mecca. At 60 tissues a box that is enough for 1.4 million wipes.

Scott paper spent M\$250,000 researching the new product and will pul M\$ 1 million into promotion this year. Then it intends to follow the Islamic toilet into the Middle East market. This toilet - a kind of combination toilet and bidet, so the douche can be achieved without moving - is manufactured by Armitage Shanks. The Malaysian government is encouraging an export drive into Third World markets, and they see no harm instarting from the bottom.

ASIAN BUSINESS, June 1986

LONDON- A SUPERB INVESTMENT

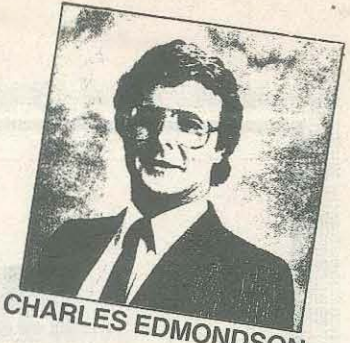


FOR THE FUTURE



JOHN PARKER

LONDON
DIRECTORS



CHARLES EDMONDSON

RESIDENTIAL SALES

ST. JOHN'S WOOD & HOLLAND PARK OFFICES-
MANY EXCITING NEW DEVELOPMENT
PROJECTS COMING ON STREAM
STUDIOS TO FIVE BEDROOM UNITS
FROM £40,000

FURNISHED LETTINGS

RETAIN A STERLING INVESTMENT BY PURCHASING A
FURNISHED PROPERTY FOR LETTING DURING AN OVERSEAS
ASSIGNMENT AND FOR YOUR OWN OCCUPATION.
FULL MANAGEMENT SERVICES AVAILABLE BY PROFESSIONAL
STAFF EXPERIENCED IN ASSISTING OVERSEAS CLIENTS!
INTERIOR FURNISHING SERVICE AVAILABLE

FINANCIAL SERVICES

MORTGAGES AVAILABLE FOR EXPATRIATES AND NON U.K.
NATIONALS; INSURANCE; BUILDING CONTENTS
SHOULD YOU HAVE ANY QUESTIONS
PLEASE CONTACT ONE OF OUR
SATISFIED CLIENTS FOR A DESCRIPTION
OF OUR SERVICES

LAURA OR JOHN STAMP-TELEPHONE 314-6921
OR BOX 24-50, BANGKOK 10240

Brian Lack & Co
OPEN 7 DAYS A WEEK

HOLLAND PARK
OFFICE
LENDING GROVE
LONDON W11 4EG
TELEPHONE 314 6921

ST. JOHN'S WOOD
OFFICE
47B ST. ANN'S TERRACE
LONDON NW1 6PL
TELEPHONE 314 6921

PANTOMIME

The co-producers of the next pantomime, to be held in January 1987, are looking for people to help in the following areas:

COSTUMES **PROMPT**
MAKE-UP **CONTINUITY**
LIGHTING **PUBLICITY**
SOUND **POSTERS**
PROPS **TICKETS**
SET CONSTRUCTION

If you have any interest, however slight, we would like to hear from you, no experience needed.

Also urgently needed:

SET DESIGNER
MUSICAL DIRECTOR

Please contact Maren White 258-1481 or Terri Jezeph 286-1165, 1474, 6625, 3138 ext.7D



BRIDGE

The British Club bridge section has planned a twelve weeks tournament starting from the third-Tuesday in September.

THE TIME TABLE WILL BE AS FOLLOWS :

<u>SEPTEMBER</u>	<u>OCTOBER</u>	<u>NOVEMBER</u>
16TH	2ND	4TH
23RD	7TH	11TH
30TH	14TH	18TH
	21ST	25TH
	28TH	

The idea is that for twelve consecutive weeks we will compete, in a very relaxed way, who will be the winners of this tournament. The best 8 scores out of twelve will be counted. This means if you miss a couple of weeks you still have a chance to win. Provided that you have played at least 8 matches not necessary with the same person as scores are calculated individually.

There will be very attractive prizes for the 1st, 2nd and 3rd placings. For those who attend at least 8 sessions there will be a attractive surprize. We thought of calling it the attendance bonuses prize. The winners of each session will of course receive the usual bottle of wine or two depending on the number of tables we have that evening. The scores in percentages will be published on the notice board and in the Club magazine.

All are welcome and please ask your friends to join.

Each night there will be one free soft drink at the bridge sections expense (Hope that there will be enough money in the kitty)

The usual fee of 20 Baht per person must be paid per session, for all you know snacks might be trown in some evenings.

depending how hungry the tournament leader is at that moment. At the prize giving dinner we all can have an enjoyable evening with winners and losers receiving attractive prizes and discussing the different hands played during the past 12 weeks of relaxed bridge.

Hope to see you all. Each session start at 7.30pm sharp. Please be in time which means at least 15 min before starting time. If you are interested to join please give a call to the following persons:

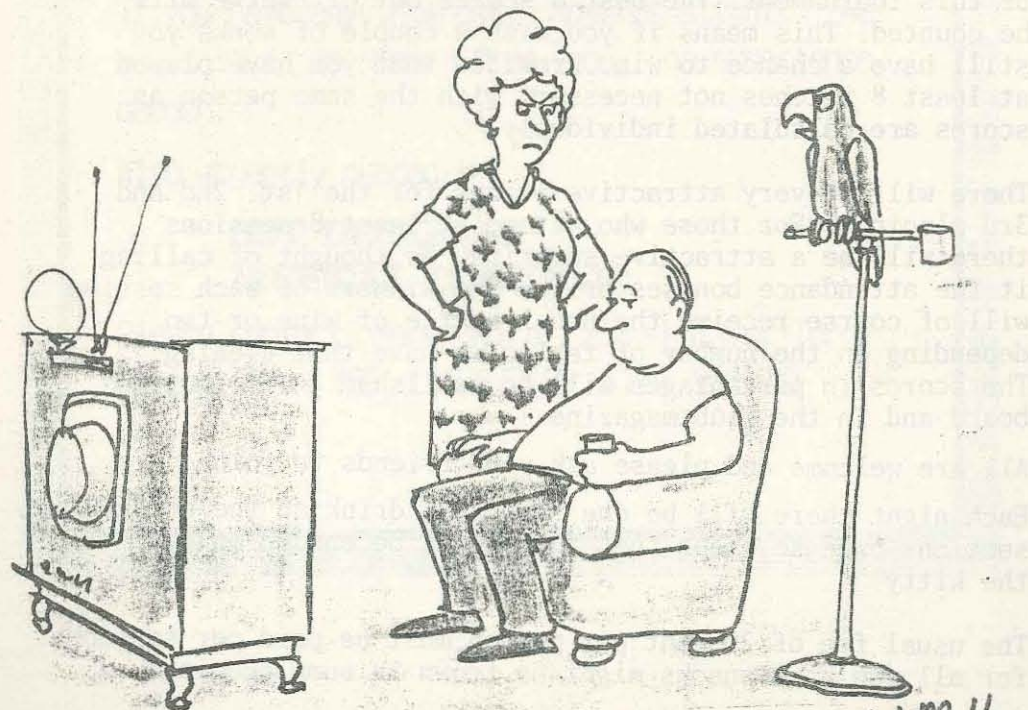
MIKE EVANS	TEL. 236-2800
HARRY KURD	TEL. 250-0575
PIETER SCHOENMAKERS	TEL. 326-6425

If you have no partner may be we could help you there.

Looking forward hearing and seeing you on 16th of Sept. our starting night.

P. SCHOENMAKERS

6th August 1986



"For God's sake! Let the man have his simple pleasures."



CRICKET

Our cricket scribe of little stature
Said he'd write an Outpost article
But now he's back
From six week's leave
Says time for writin's short in particular

But really there's not much to say
Cause during rainy season there's no play
But if to Bangkok
You've just come
Watch this page cause soon we'll be practicin

Our AGM will soon be coming
On October 10th the date's been set
So if cricket this season you want to play
Come and vote and have your say

We have to choose a captain
And plan our season's strategy
Our practices will start in November
And in Chiang Mai we'll play on 6th and 7th December

If you don't like my poetry
Blame it on David Hall for being dilatory



EXPRESS

MAINTENANCE SERVICE (BANGKOK) CO. Ltd.

NEW!

Home Repairs and Renovations

TOP QUALITY SERVICE

EXPATRIATE MANAGEMENT & SUPERVISION

A FULL RANGE OF HOUSE IMPROVEMENTS

including

DECORATING

CARPENTRY

PAINTING

PAVING

PLUMBING

ROOFING

REMODELLING

GLAZING

ELECTRICAL WIRING

We also offer office refurbishments of the same high standard.

Call us

for a Free Estimate

9a.m. to 5p.m.

EXPRESS MAINTENANCE

24/1 Sukhumvit 2

☎ 252-5704/5



LADIES' GOLF

This will be the last Outpost on our golf until I return in October. I shall catch up in due course after my return from leave. Welcome back to all the girls returning to Bangkok in September whom I shall miss. Happy golfing and good luck with your game. No doubt there will be vast handicap changes (for the better) on my return.

Dolores will be doing the starting for September so any queries may be made to her. Wendy Binns, our treasurer, is now back so please pay your second half subscriptions to her if you have not already done so.

We welcome Sriwan Forrest, who joined us in July, and who won her first competition with us that day. Well done Sriwan. Also welcome back to Pam Smith, who rejoined us after a long absence. Glad to see you back in form Pam.

Margaret and Dolores are now back from Malaysia after competing in two Open Championships there. Margaret was selected for the TALGA team in the Johore Open, and Dolores played as an individual under the TALGA flag in both the Johore and another Malaysian Club Open.

Late News

Margaret and Dolores, now back from Malaysia with no trophies but with both girls having made the cut for the play-off. Well played girls!

Competition Results

July 15th - Bogey

Winner	Sriwan Forrest	(39) +9
Second	Joyce Tyler	(32) +6
Third	Betty Watters	(32) +4

Near Pin

No. 4	Joyce Tyler
No. 13	Margaret McEwan

Under Par : Joyce Tyler (32) 66 nett
 : Betty Watters (32) 71 nett
 Low Putts : Dee de Bettincor 29 putts

July 22nd - Blind Partners

Winner : Heather Auger (39) 155 nett
 : Betty Watters (31) " "
 Runners-up : Heather Auger (39) 158 nett
 : Joyce Tyler (31) " "

Near Pin

No. 8 : Heather Auger
 No. 13 : Joan Jurgens

July 29th - LGU Medal

Silver Division

Winner : Margaret McEwan (19) 81 nett
 Runner-up : Janice Dahl (27) 82 nett

Bronze II Division

Winner : Maureen Hyde (30) 78 nett
 Runner-up : Sriwan Forrest (36) 88 nett

Near Pin

No. 4 : Maureen Hyde
 No. 13 : Margaret Ross

Longest Drive : Mariko Shimada

Well done Maureen - the only person in the nett 70's.
 However the conditions were really wet this day so all
 the scores were pretty horrendous!!

August 5th - Stableford

Flight 'A'

Winner : Dee de Bettincor (20) 34 points (count back)

Runner-up : Margaret McEwan (21) 34 points (count back)
 Third : Pam Hardy (23) 34 points

Flight 'B'

Winner : Betty Watters (32) 38 points
 Runner-up : Maureen Hyde (31) 37 points

Near Pin

No. 8 : Maureen Hyde
 No. 13 : Margaret McEwan

Forthcoming Competitions

September 2nd	STABLEFORD	September 23rd	PAR BISQUE
September 9th	BOGEY	September 30th	LGU MEDAL
September 16th	T's and F's	October 7th	STABLEFORD

Handicap Changes

Joyce Cadwallader	39 to 38	Merle Decot	28 to 29
Dee de Bettincor	19 to 20	Sriwan Forrest	39 to 36
Dolores Aaron	18 to 17	Maureen Hyde	32 to 31
Heather Auger	40 to 39	Joyce Tyler	32 to 31
Wendy Binns	26 to 25	Mo Harris	18 to 19

AFTER THE CROSSWORD WHAT IS THERE?

VIDEO!

Watch a film of your choice in the
comfort of your own home.

Short term rental available for video,
television, air-condition, refrigerator.

TV Rentals

Tel. 258 5093
258 9301



THRIFT HIRE uk car hire

UNLIMITED MILEAGE - FREE DELIVERY AND
RECOVERY HEATHROW OR GATWICK OR OTHER
UK AIRPORTS BY ARRANGEMENT

WEEKLY RATE £80. DISCOUNT FOR LONG TERM
HIRE - FOUR WEEKS OR MORE AT £70 WEEKLY



THRIFT HIRE
ALEXANDRA DOCK
KINGS LYNN
NORFOLK PE30 2EZ
ENGLAND

TELEX 818791 ASHIP
PHONE (0553) 760990 (OFFICE)
(03664)313 (HOME)
BANGKOK ENQUIRIES:
234 6550



SWIMMING

Welcome back to all of our swimmers & a very warm welcome
to some new swimmers who will be joining our group in Sep-
tember.

Our new chairman Mike Miles has just come back from his
vacation all fresh & relaxed with lots of good ideas for
the swimming section.

This month Sunday Sept. 21st at midday we will have our
annual family swimming gala. Everyone can join in. Races
for all ages. Beginners race with bouyancy aids. Family
races, commonwealth races. There will also be abahd dive
at the end of the day. Entryfee 60 Baht.

There are cups & medals to be won. So come along don't
miss the fun.

SEE YOU AT THE POOL !

BRITISH CLUB SWIMMING SECTION

Autumn Swimming Lesson Schedule

This year the swimming lessons at the British Club will follow a different system from that of previous years.

Lessons will be arranged in "courses" for set periods of time rather than on a per-lesson basis. We hope by this design to assist the grouping of students more appropriately for instruction at appropriate levels as well as to simplify the administration of the program, both for the parents of students and for the Club.

Schedule for lessons for the fall (along with levels of instruction) is as follows:

	MONDAY	TUESDAY	WEDNESDAY	THURSDAY	FRIDAY
13:30 - 14:00	BEG	BEG	BEG	BEG	BEG
15:00 - 15:30	BEG	JR	BEG	JR	BEG
15:30 - 16:00	INTER/SR	INTER/SR	JR	INTER/SR	INTER/SR
16:00 - 16:30		ADULT		ADULT	

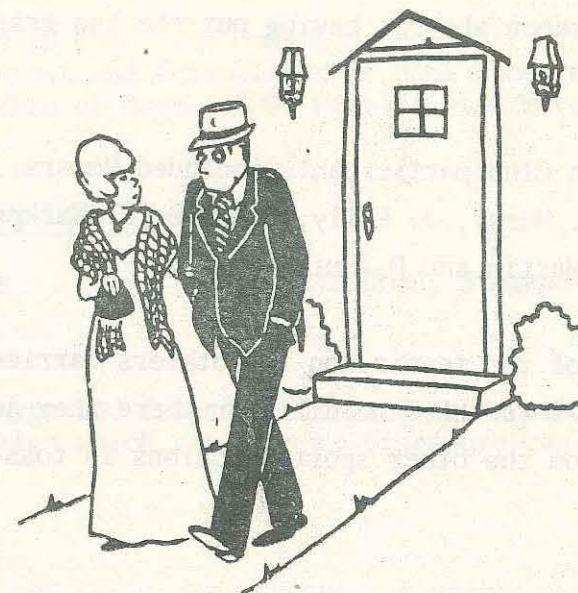
KEY : BEG = Beginner JR = Junior
 : INTER = intermediate SR = Senior

Parents are requested to register their child for the appropriate swimming level and time slot. Courses will run for eight weeks at a time as follows:

COURSE 1 : September 2 - October 24

COURSE 2 : October 27 - December 19

Course fees will be 450 per course per student and are payable upon registration. Please note that there will be no refund of fees for students who do not attend individual lessons. In the event that the instructor is not available to give a scheduled lesson, rescheduling of that individual lesson will be made within the period of the course and no extra fees will be charged.



"Because somewhere between your third and fourth drink your conversation went from thought-provoking to just plain provoking."



TENNIS

B.C. FRIENDLY MATCHES WITH H.M.S. AMAZON

On Saturday afternoon, 26th July 1986, a contingent of tennis players from H.M.S. AMAZON, engaged in a number of friendly tennis matches on the Club's two hard courts - the early afternoon showers having put the two grass courts out of play.

British Club participants included Messrs, C. Wray, S. Chappell, R. Merry, J. Kelly, B. Hyde, K. Narkprasert, D. Benham, G. Martin and D. Smith.

A few of the tennis non-teetotalers carried the festive spirit into the Churchill Bar where they joined the large crowd from the other sports sections in toasting the visitors.

RECIPROCAL CLUBS

Arrangements have just been concluded with two additional Clubs for reciprocity. Both prestigious Clubs have first rate facilities and are excellently located in Hong Kong and Singapore respectively.

HONG KONG FOOTBALL CLUB

Address : Sports Road Happy Valley, Hong Kong
Tel : 5 - 778828, 5 - 762808, 5 - 772320

Founded in 1886, the Hong Kong Football Club is reputedly the busiest and friendliest in Hong Kong, and boasts a membership of over 1,000. Facilities are varied and excellent.

AMERICAN CLUB SINGAPORE

Address : 21 Scotts Road, Singapore 0922
Tel : 737-3411

This large and friendly Club has an excellent range of facilities which visitors to Singapore can now enjoy.

Membership Matters

NEW MEMBERS

The following were elected to Membership of the British Club in August 1986

ORDINARY:

Mr. N.J. Dunne	Voluntary Service Overseas
Mr. M. Puzio	Weatherford Inc.

NON-VOTING:

Mr. N.B. Brown	Balfour Kilpatrick Telecom
----------------	----------------------------

ASSOCIATE:

Mr. H. De Jonquieres	The East Asiatic Co.. Ltd.
Mr. Yin Puu Tyan Yin	-
Mr. Decho Sithisariputra	Tawana Sheraton Hotel

Status of Membership

The current membership status is as follows :

Honorary	10
Ordinary	343
Non-Voting	10
Associate	69
Ladies Privileges	36
Up-Country	23
candidate	4
	<u>494</u>
	TOTAL
Absent	854
	<u>1348</u>
	GRAND TOTAL



Committee

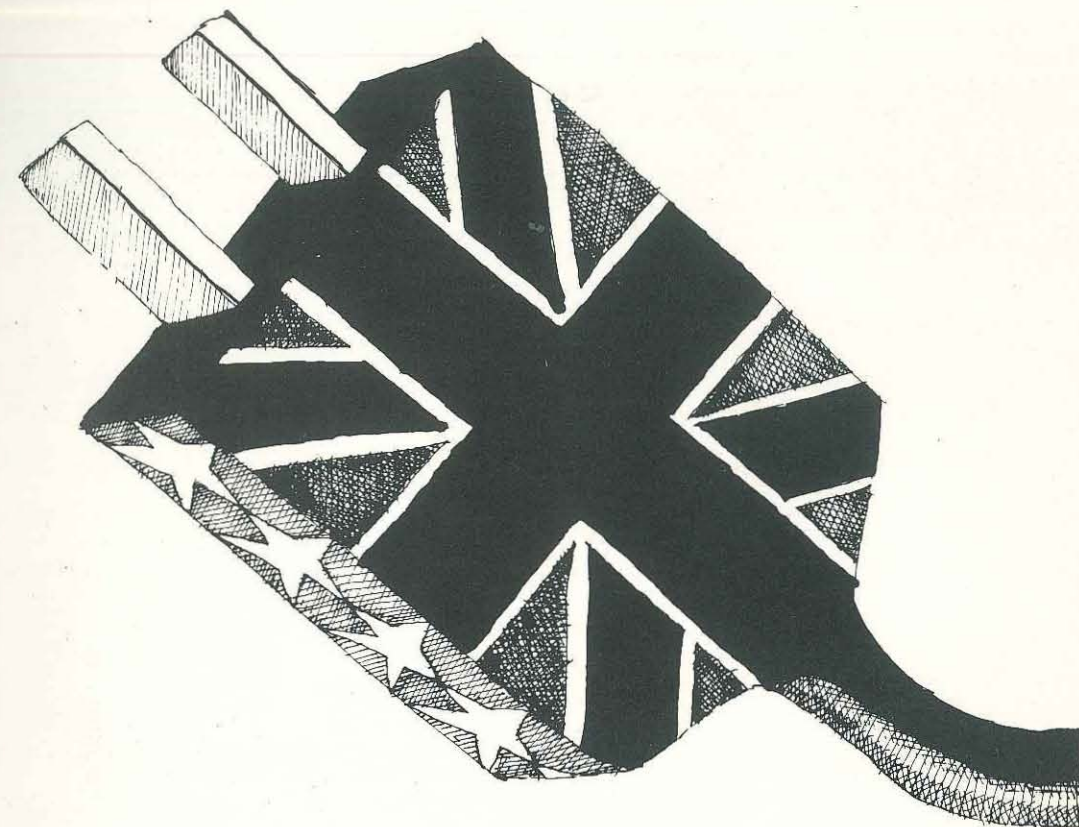
	<u>OFFICE</u>	<u>HOME</u>
JACK DUNFORD (Chairman)	236 0211	286 1356
BRIAN HEATH (Vice-Chairman)	282 9161 x 191	321 1723
Geoff Percival (Hon. Treasurer)	-	314 2464
Richard Duffy (Food & Beverage)	236 6916	258 4387
DAVID HALL (Personnel)	529 0100 x 2867	392 2410
DOUGAL FORREST (Sports)	-	-
RICHARD HOPKINS (Entertainment)	286 2642	211 9620
VINCE SWIFT (Membership/Outpost/Publicity)	252 4294	258 8522
ALISTAIR RIDER (Membership/Outpost/Publicity)	251 9905	251 8369
TERRY ADAMS (Membership/Outpost/Publicity)	211 5808	253 9653 x 51A

DAVID WILLAIMSON (Manager)	234 0247 234 2592	258 8522
ADISAK KAMKHANTI (Asst. Manager)	234 0247 234 2592	-

ACTIVITIES

ANYONE WHO IS INTERESTED IN PARTICIPATING IN ANY ASPECT OF THE FOLLOWING ACTIVITIES SHOULD CONTACT :

BILLIARDS/SNOOKER	-	RON ARMSTRONG	390 2445
BRIDGE	-	MIKE EVANS	252 8927
CRICKET	-	JACK DUNFORD	236 0211
DARTS	-	MIKE MAJER	513 1970
GOLF	-	BARRY HYDE	393 0556
LADIES GOLF	-	MRS. M. HARRIS	258 5603
RUGBY	-	TERRY SMITH	253 0557 391 5832
SOCCER	-	CRAIG RENNIE	236 0205 236 4281
SQUASH	-	LESLIE CURRIE MIKE KELLY	314 7434 253 0191 x 220
SWIMMING PRACTICE (KHUN CHOON)	-	MRS. ERIKA MAJER	252 7492
SWIMMING GALA	-	Mr. Mike Miles	252 7492
TENNIS	-	BRUCE POINTER	233 2020



MOVING. Impeccable Connections.

Courtesy of the British Association of Removers.

As local representatives, the American-managed Transpo can immediately plug into a British network guaranteeing smooth door-to-door moves from Thailand to anywhere in the United Kingdom.

And throughout the Commonwealth. Indeed, worldwide.

Our satisfied clients include the British Embassy, British Airways, Anglo-Thai, Leonowens, Borneo and the British Council.

And besides offering Thailand's most

experienced Moving Service, we have our own Air Freight Division, a Sea Cargo/Brokerage Division, and a Housing Division that helps clients locate houses, apartments and offices throughout metropolitan Bangkok.

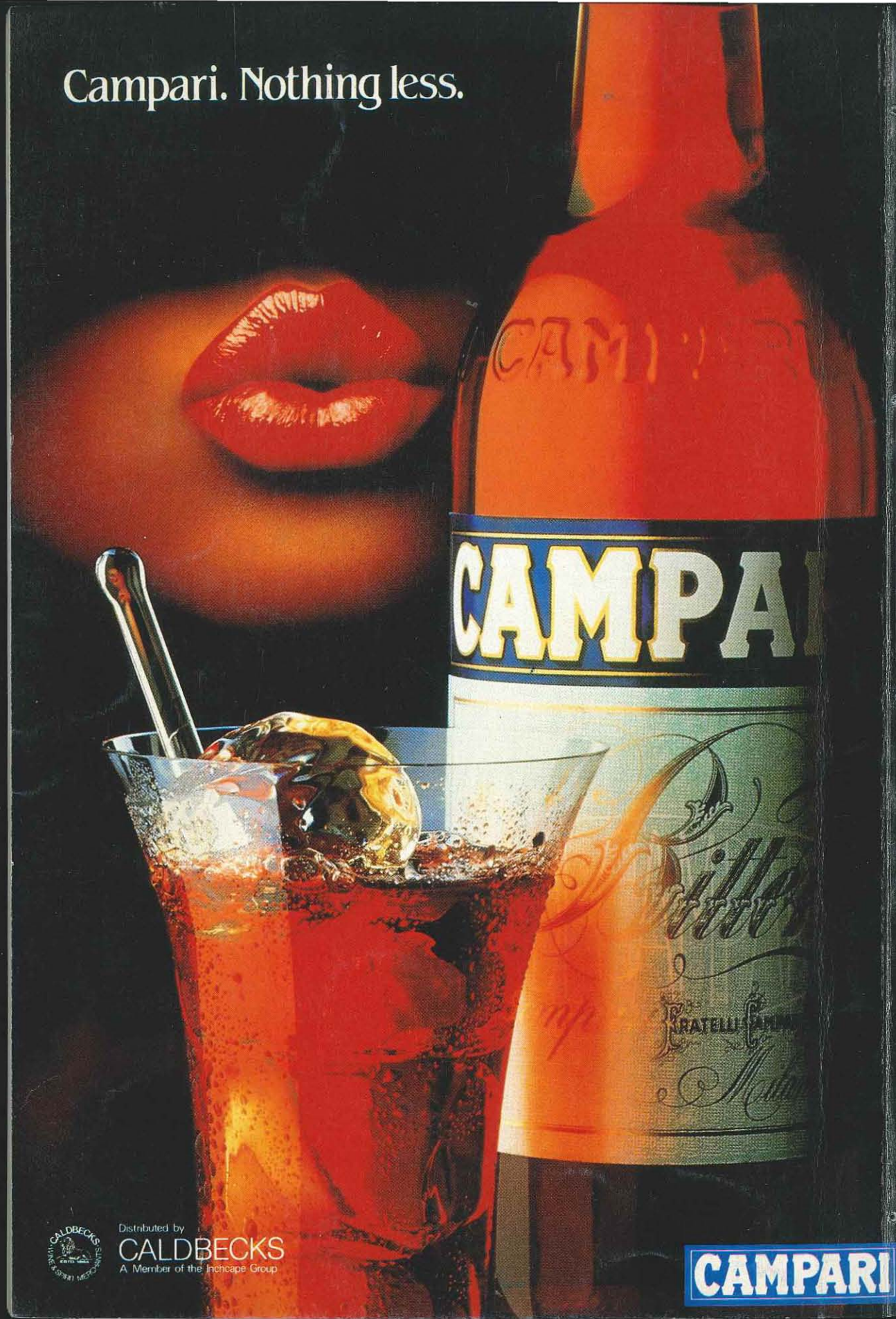
Contact Transpo for swift action. Our connections are impeccable.



TRANSPO INTERNATIONAL LTD.
134/31 Soi Athakravi 3, Rama IV Road,
Bangkok 10110, Thailand
Tel: 259-0116-20, 258-6555, 258-6558
Telex: TH 82915

With Transpo, you can be sure.

Campari. Nothing less.



Distributed by
CALDBECKS
A Member of the Incheape Group

CAMPARI