



OUTPOST

MAGAZINE

NOVEMBER • 2002



Golf



Soccer



New Members



Squash

The London Pub in Bangkok



Real English Beer
Served with Style

591 UBC II Building, Basement B104, Sukhumvit 33, Wattana, Bangkok 10110
Tel: 0 2261 0238-40 E-mail: info@the-londoner.com Internet: www.the-londoner.com
Every day 11:00 am - 01:00 am



Contents

REGULAR FEATURES

Calendar	5
Crossword	15
General Manager's Message	4
Hellos and Goodbyes	26
New Members Night	17
Reciprocal Club - Tanglin Club, Singapore	18
Relaxed Regulars - Happiness is doing nothing...	10
Sports Update - Fitness for all ages	10
What's On - Start Training for the Party Season	24

SPORTS

Football - BC Coffin Dodgers	22
Golf - First time for everything!	13
Scuba - Basic Life Support	18
Squash - Victory for the Bouncing BC Boys	26
Tennis - To Toss or not to Toss!	7

FORTHCOMING EVENTS

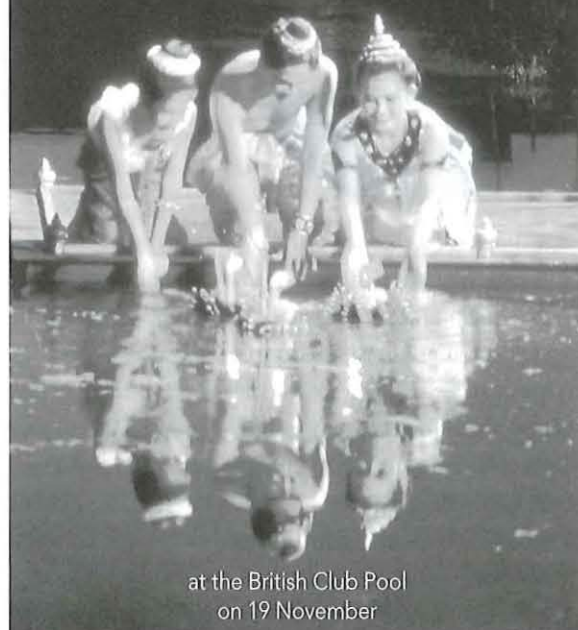
Wildlife Education Tour	17
Ploenchit Fair	21
Ploenchit Fair's Grand Raffle Prizes	20
Bangkok Lecture - National Museum Volunteers	25
"Annie" Auditions	11
The Nut Cracker Puppet Show	11

ADVERTISERS

Many thanks to our advertisers this month, without whom this magazine would not be possible:

Dulwich International College, Phuket
 Jentana & Associates
 Metro Magazine
 Patana International School
 Portsmouth Mann International Ltd.
 SriLankan Airlines Limited
 The Londoner
 Transpo

Loy Krathong



at the British Club Pool
on 19 November

The British Club is a family, social and sporting club, set in relaxing grounds, conveniently located between Silom and Surawongse Roads, with an ever-growing international membership.

For details about the Club contact the Membership Marketing staff at:

The British Club

189 Surawongse Road, Bangkok 10500

Tel: (0) 2234 0247

Fax: (0) 2235 1560

Email: britclub@loxinfo.co.th

Website: www.britishclubbangkok.org



OUTPOST MAGAZINE

The contents of this magazine are not necessarily the opinion of the Editor, the General Committee or the Management of the Club.

OUTPOST Magazine is produced on behalf of the British Club by The Creative Partnership. To advertise please contact Mr. David Blowers or K. Saranluck at: The Creative Partnership
 Tel: (0) 2285 4721-3
 Fax: (0) 2678 1292
 Email: info@creativethailand.com
 Website: www.creativethailand.com



GM'S BRIEF

**Dear Members,**

Two months to go and we will put 2002 behind us and start the Centenary Celebration in 2003. Several sport section have informed us already about their centenary events planned for next year. As soon as the sport section have finalised a date please let us know as soon as possible so we can make sure that the events will not overlap with Club events of other Club celebrations.

But before we will start the Centenary celebrations we have still two very busy months ahead of us. In November we kick off the Guy Fawkes on Sunday, 3 November 2002 followed a week later by the Nut Cracker Puppet Show and a lot of Family activities at the back lawn on Sunday, 10 November 2002. From 15 – 17 November 2002 we have the annual outing to the Elephant Round up in Surin, 23 November 2002 Ploenchit Fair, 30 November St. Andrew's Ball at the Shangri La and prior to the Ball every Monday in November

Scottish Dancing on the Front lawn and the 'Beat the Retreat' on Wednesday, 27 November 2002.

Obviously for more activities during the month of November, please refer to the management news in this issue of *Outpost*.

Also for the month of December we have planned all the main activities around Christmas and New Year. I would recommend to book in advance in order not to miss any of the Festive events. On Saturday, 14 December 2002 we will be organising our Traditional Christmas Ball on the back lawn. This year the tickets will be B 1850 nett including; pre dinner drinks, half bottle of wine per person, three course dinner, Orchestra performance during dinner and Paul Jackson will specially fly in from the UK to be the super DJ for the night. The main raffle prize will be two return tickets to London sponsored by KLM – Royal Dutch Airlines.

In the Lord's Dining Room, Pool side and the Churchill Bar we have implemented new menus and if you have any suggestions or comments please share them with us. Also the wine list has been upgraded with a larger selection of wines.

On the development side, the Club House toilet renovations have been slightly delayed due to some minor changes in the layout, but very likely this project will start before the year end. Same will apply to the upgrading of the Children Changing facility near the Silom Sala.

Also this time of year, a lot of our Members organise functions at the Club or at their residence or office. The catering team is looking forward to assisting you with your catering requirements. For more details please contact Barry Osborne – Operations Manager or Khun Ben – Catering Coordinator.

Looking forward to see you at Your Club in a not too distant future.

Yours sincerely,

Willem T. P. Pentermann
General Manager

www.britishclubbangkok.org

COMMITTEE CONTACTS

The British Club General Committee 2002/2003

Name		Tel	Fax	Email
Bob Marchant	<i>Chairman</i>	(0) 2714 8070-3	(0) 2714 8504	britclub@loxinfo.co.th
Chris Moore	<i>Vice-Chairman</i>	(0) 2740 4521	(0) 2740 4530	lasanne@loxinfo.co.th
Paul Cheesman	<i>Vice-Chairman/ Honorary Secretary</i>	(0) 2677 5246	(0) 2677 5246	paulc@loxinfo.co.th
Nick Bellamy	<i>Treasurer</i>	(0) 2955 0099 x 8760	(0) 2955 0300	nbellamy@th.mweb.co
David Eastgate		(0) 2672 0123-5	(0) 2672 0127	davide@loxinfo.co.th
James Young		(0) 2712 5407-9	(0) 2712 5410	asiapac@mozart.inet.co.th
Sarah Allen		(0) 2618 7813	(0) 2618 7811	sarahem@ksc.th.com
Simon Davies		(0) 2253 7719	(0) 2253 7504	simon@jts.jp.co.th
Bruce Hill		(0) 2937 4940	(0) 2937 4952	subru@loxinfo.co.th
Angela Daniel		(0) 2258 8495	(0) 2258 8495	ange@loxinfo.co.th

CALENDAR

BRITISH CLUB SPORTS AND ENTERTAINMENT CALENDAR - NOVEMBER 2002

**SPORTS**

- 9.00am - midday Squash Coaching
9.00am - 1.30pm BC Swimming Instruction

**SPORTS**

- 7.00am - 1.00pm Tennis Team Practice
9.00am - 11.00am Junior Cricket
10.30am - midday Taekwondo
11.00am - 1.00pm Badminton - Soi Nares
2.00pm - 4.00pm Children's Activities
3.00pm - 6.00pm Tennis Mix-in
3.00pm Yoga

SPORTS

- 8.00am BWG Mahjong
7.00pm - 9.00pm Tennis Team Practice

**SPORTS**

- 7.00am Ladies Golf
8.00am - 10.00am Ladies' Tennis
10.30am - 11.30am Aqua Aerobics
11.30am Yoga
2.00pm - 5.30pm Swim with the Bangkok Dolphins
2.00pm - 7.00pm BC Swimming Instruction
7.00pm - 9.00pm Football Training

CHURCHILL BAR ACTIVITIES

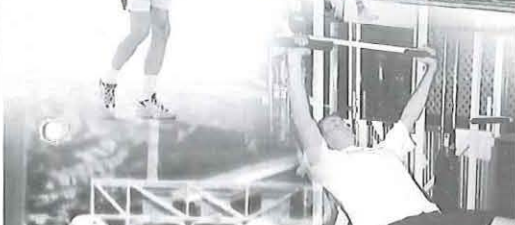
- 6.00pm - midnight Ladies' Night
8.00pm - 11.00pm Friendly Bridge
9.00pm Gentlemen's Spoof

**SPORTS**

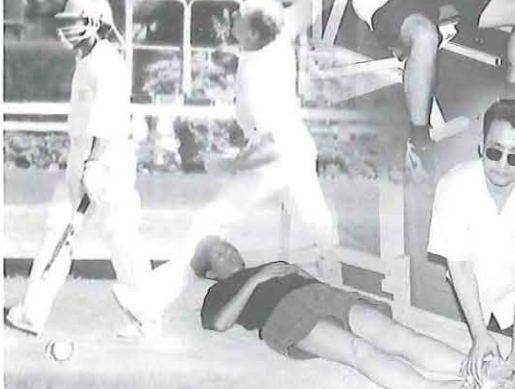
- 9.30am Aerobics
6.00pm - 9.00pm Tennis Mix-in
6.30pm Cricket Nets

CHURCHILL BAR ACTIVITIES

- 7.00pm Darts
7.00pm Accumulator

**SPORTS**

- 8.00am - 10.00am Ladies Tennis
6.00pm - 9.00pm Squash mix-in
7.00pm - 9.00pm Rugby Training
9.00pm - 10.00pm Hockey Training

**SPORTS**

- 9.00am ANZWG Mahjong
3.30pm - 6.00pm BC Tennis Coaching for Children
4.30pm - 5.15pm Mini Squash
5.15pm - 6.00pm Junior Squash
5.00pm Tennis Mix-in
5.30pm Swimming - Junior Squad Training
6.00pm - 7.00pm Adult Tennis
6.30pm - 9.00pm Poolside BBQ
7.00pm Children's Movie Night

November at a Glance

Sunday, 3	Guy Fawkes Night
Wednesday, 6	Club Manager's Night
Friday, 8	New Zealand Wine Tasting
Sunday, 10	Nut Cracker Puppet Show
Tuesday, 12	New Members' Night
Friday, 15	Bar Quiz
15 - 17	Surin Elephant Round-up
Tuesday, 19	Loy Krathong
Wednesday, 20	Comedy Movie Night
28 - 29	Canadian Food Promotion

See page 24 and GM'S Message
for more details

Sports - Contacts

Aquatics	Nicole Nuttall	0 2300 3272
Badminton	Anant Leighrahathorn	0 2654 0002-29
Bridge	Winlock Hsu/ Charlene Wang	0 2921 6015
Cricket	André Tissera	0 2238 2718-21
Darts	Fitness Centre	0 2234 0247
Football	Martin Conisbee	01 860 4874
Golf	Karen Carter	0 2285 6169
Spoofers	Steve Eaton	0 2237 9262
Rugby	Jon Prichard	0 2662 6376
Scuba Diving	Peter Gary	0 2634 7799
Snooker	Khun Kittisak	01 633 9490
Squash	Peter Corney	01 829 2253
Tennis	Terry Adams	01 639 3856

Loyal Societies

St George's	Angela Stafford	0 2632 0560 x 3037
St Andrew's	Meilan Henderson	0 2259 0586
St Patrick's	Ian Kane	0 2678 1813 x 1738
St David's	Basia Filzek	02 286 1348

Venues

Badminton	Soi Nares, behind Bangrak Police Station
Aerobics	Wordsworth Room
Casuals Football	Colgate Ground, Rama III
Massage	Near the Silom Sala

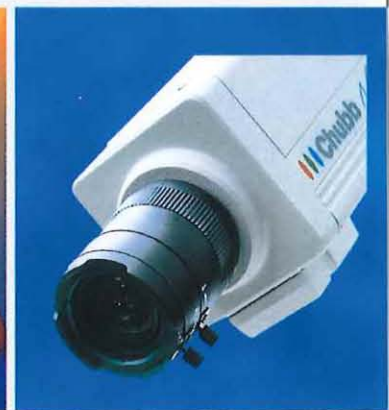
Opening Times

10.00am - 11.00pm	Churchill Bar
11.30am - 2.00pm	Lords Restaurant (Lunch)
6.00pm - 10.00pm	Lords Restaurant (Dinner)
7.30am - 10.00pm	Poolside Bar
6.00am - 9.00pm	Fitness Centre
9.00am - 6.00pm	Thai Massage (Tues-Sun)

SAVING LIVES, PROTECTING PROPERTY, PREVENTING CRIME



คุ้มครองชีวิต ปกป้องทรัพย์สิน ป้องกันอาชญากรรม



Offering Thailand comprehensive fire and security solutions.

Capable professionals, the finest in products & electronic systems

with over 180 years experience.

Chubb (Thailand) Limited

THB Building, 7th Floor, 42/2 Moo 10, Km 4.5

Bangna Trad Road, Bangna, Bangkok 10260

Tel. (66) 2 746-7000 Fax. (66) 2 746-7001

E-mail: info@chubb.co.th

www.chubb.co.th



Guardforce

TENNIS SECTION

To Toss or not to Toss!

MONTHLY MIX-IN COMPETITION

Sunday, 1 September

An ideal turnout of 16 players with a good mix of A, B, and C Grade players. After four rounds of mix-in doubles matches, mostly very closely fought, the winners were:

1st	Steve Goode	23 games
2nd	= Id Gainsford	22 games
2nd	= Jesada Tanking	22 games
4th	Michael Turner	19 games

Bottles of wine were presented to each of the above. The white wines were already well chilled – what a nice surprise! Good fun and some good tennis!

MATCH V THANA CLUB

Saturday, 7 September

The BC's finest lined up for the match against the Thonburi Club, traditionally very strong opposition, only to have them cancel at the last minute for a second time!

Laurence Lipman, aka Lip to the BCTS, came to the rescue at the last minute by organising the Thana Club to step in. He was mightily concerned that the BC could be too strong. A point repeated often on the days leading up to the match. Lip you now have a credibility problem!

It soon became very clear that the Thana Club were very handy indeed. A very close match ensued and The BC lost by 13 matches to 11, our first defeat of the year.

Results:

Player	Games Won	Player	Games Won
Brad Weatherstone	3	Nisa Adams	2
Khun Phairoj	2	Teresa Turner	2
Bob Bosch	2	Wan Adams	1
Eiji Hanao	2	Zandra White	1
Marc Nussaume	1		
Frank Gluck	1		
Steve Goode	1		
Khun Vorathep	1		
Michael Turner	1		
Ori Dolev	1		

My thanks to Marie Goode and Christine Koenig, who also played. Brad, not altogether unexpectedly, was able to prevail with every partner and was the only unbeaten BC player in the match. A warm welcome to Frank, yet another very talented Frenchman, who demonstrated he will be a force to be reckoned with. The best of the BC had better take care.

Thank you to everyone who turned out, as it was a very enjoyable afternoon. We will not be so easily misled by the opposition's

propaganda for the return match in the near future. (Report from James Young)

"ANOTHER GREAT TENNIS EXTRAVAGANZA"

AT THE BC

As you can see from the below, the superb efforts of Bruce and Mark H in organising the event and in achieving an excellent entry of 30 players came to naught as the weather for once let us down badly. Hopefully, the 20 odd eager participants that turned up on the day enjoyed a 'hearty and possibly healthy' BC breakfast before swimming home!



AUGUST AND SEPTEMBER

LEAGUES WINNERS:

August	September
League 1: James Young	James Young
League 2: Johnny Quah	Johnny Quah
League 3: Lawrence Lipman	Bruce Gordon
League 4: Khun Yuparet	Khun Wan

Congratulations to the above winners, who will eventually receive their prizes.

TENNIS SECTION

SATURDAY, 5 OCTOBER

**MATCH V THE SILOM CLUB,
at The Silom Club, Silom Road,
Bangkok (not far from the BC)**



Despite having a good quality team, the BC were thoroughly outgunned by The Silom Club, who won all the six Mens' Doubles matches, and 2 of the 3 Ladies' Doubles. Our only victory was in the top Ladies' Doubles Match where Teresa and Nisa won well. James and Phairoj looked set to win, but a disputed score caused them to lose concentration, and then the match. Thankfully, to save further humiliation, the rains came down at around 6.00 pm, although at that time we were ahead in all the 3 matches on court.

SUNDAY, 6 OCTOBER

MONTHLY MIX-IN COMPETITION

A very disappointing turnout of only 7 players, eventually lifted to 8 by 5.15 pm. However, lots of fun, and the prizes were enjoyed, as witnessed in the below photograph. Welcome to new Member Kay Young from Aussie, who had to leave before the photo was taken.



TENNIS ETTIQUETTE

Service Returns

In returning service the partner of the receiver should call the service line for him, with the receiver calling the centre line and the side line, although either partner may make an out call on any shot (service or other) that he clearly sees out. It is difficult for the receiver, who is looking across the service line, to call with accuracy a shot that lands

EVENTS LATER IN THE YEAR

November:

- Match v Krung Thai Bank
- Men's Inter Club Tournament to be held at the Polo Club on 16 & 17 November which would follow the usual format of 6 teams of 5 age-related pairs of 35+, 40+, 45+, 50+, 55+, playing a Round Robin 1st round followed by a 2 Group Knock Out for the final round.

December:

- Match v United Nations
- British v German Chambers of Commerce annual tennis match
- Table at the BC Christmas Ball.

near that line. This is the reason why in singles a receiver will frequently find himself unsure of a serve and put it in play even though later it is determined that it was out. Returning a service that is obviously out (accompanied by an out call) is a form of rudeness, and when the receiver knows that in making these returns he bothers the server it is gamesmanship. At the same time it must be expected that a fast service that just misses the line will frequently with justification be returned as a matter of self-protection, even though an out call is made. The speed of deliveries is such that if the receiver waited for a call before he started to make a return he would be overpowered. Probably the most difficult shot in tennis to call accurately is a hard flat service, aimed directly at the receiver, that hits within an inch of the service line in a grass court singles match. Returning a first service that is obviously out without an out call in an attempt to catch an opponent off guard is cheating. At the same time, if the receiver in good faith gives the server the benefit of the doubt and returns an out ball, the server is not entitled to refuse the benefit of the doubt and ask for a let on the basis that since he saw the serve out the return caught him by surprise. When the server causes a delay between the first and second serves, he has one serve to come. When there is a delay between serves that interrupts the natural flow of the match



(Before the rains came)

TENNIS SECTION

and when the delay is caused by the receiver or outside interference, the server has two serves to come. The receiver determines whether the delay has interrupted the natural flow of the match.

TIP OF THE MONTH

Serve Power And Consistency:

It's A Toss Up

Whether you are looking to serve bigger, smarter or with greater variety, one of the most important things you need to consider is your toss. Without a good and consistent toss, there will be no reliable serve.

In watching lots of matches (professional, college, high school, recreational), I have learned that an inconsistent toss is one of the principle reasons that a player's serve can "go south." But how often do we pay attention to this part of the serve?

Generally, one can describe a toss from one of several different perspectives: toss height, toss placement with respect to the body, and toss rotation of the ball during the toss. Each of these factors is important to understand when one starts to work on her/his serve.

Let's start with how high one should toss the ball. I have a theory. The best serves on the tour are those that are either fairly high or comparatively low. The tosses that are in the middle lead to what are usually average or mediocre serves.

Some years back, I had the opportunity to observe Roscoe Tanner serving at a club in California when he was a teaching pro there. Now, Roscoe has one powerful serve. What makes it even more difficult to handle is the fact that it is almost impossible to "read." (The fact that Roscoe hits left handed helps, too!) Roscoe uses an extremely low toss for his serve. His motion is so compact that when you see him serve it seems as though the ball is upon his opponent before he even tosses the ball. Although he uses lots of knee bending arm strength to impart the pace, his feet do not really leave the ground. I suspect that he developed this practice, in part, when the rules of tennis mandated that at least one foot be on the ground during the serve (Don't ask me when they changed this rule. It was way before my journey into tennis.)

Although Roscoe's timing must be perfect for his serve (he has no time to really adjust before he makes contact with the ball), there are clear advantages to his approach.

First, the ball is likely to be less affected by any wind conditions. Playing lots of tennis, here in New England, I can testify that there are often times a breeze that can play havoc on a player's serve...especially, in the spring

and fall months. Second, a low toss is usually helpful when the sun is in a disadvantageous position. You may not have to adjust the toss as much when the sun is directly in your eyes at the moment of impact. In fact, you may find that the process of serving with this low toss is so compact and short in duration that you really don't have to adjust the toss at all. Finally, if you have bad body parts like knees and back (as do I) the low toss will take some strain off of these.

The fairly high toss is more likely to be seen on the tours today. This is because most women and men on the pro circuits are going airborne on their serves. They literally jump up to the ball at the moment of contact. This action allows them to hit up, and then, snap down with their wrists during the serve. The net consequence of all of this is more power. The second way of looking at the toss is where it is placed...in front, to the side, or directly above (or even behind) the body. Simply put, tosses that are in front of the body usually result in more powerful serves that cross low to the net. Tosses that go to the side of the body are not advised, unless one is hitting a slice serve that is intended to spin out to the same side. The toss that is directly above the head, or perhaps, behind the body usually is what is needed for the "kick" serve that bounces higher and usually to one side.

Lastly, the toss of the ball can be viewed from the perspective of its rotation. In my photographing the men and women on the pro tours, I became aware that those who serve best usually toss a ball that has absolutely no spin to the ball as it goes up. Those with less consistent serves seem to impart a slight spin to the ball as it goes up. My serve improved dramatically when I worked on my tossing motion and developed a relatively spinless toss.

So, what do you need to do with respect to improving your toss? Well, my first suggestion is to "discover" your best serve heights and "spots." To do this, you need to spend some serious and explorative time practicing your serve in different ways. Experiment with different heights. I think older players with the body symptoms typically found in this age group will greatly benefit from lowering their toss. The younger player who is looking to increase power may best benefit from a higher toss that forces her/him to literally reach up and jump up to make contact. (As a note of caution, if you elect to go airborne on your serve, try to make contact with the ball at the peak of its path...do not allow it to drop back down).

Whenever you serve (whether in practice or

in matches) make sure you visualize the "spot" where you want the toss to go before you begin your service motion. This will greatly improve the likelihood that you will hit the proper "spot." Also, it will keep your mind from focusing on double faulting, if it is your second serve (how many times have you thought about double faulting...and then, fulfilled your premonition?).

Decreasing or eliminating any rotation of the ball during your toss will take a little more time. The elements to achieving this that need to be followed are:

1. Hold the ball at your fingertips.
2. Keep the palm of your hand up through the entire toss motion.
3. Try to relax your arm as much as is possible.
4. Keep the elbow from bending as you toss. I found that by holding two balls in my hand when I practiced the toss (as the pros did years back when two handed backhands were a rarity) forced me to learn to use my fingertips appropriately. I would not hold two balls during a match because I do use the two handed backhand, but in practice, I will start my serving in this manner...just to make sure I use my fingertips properly.

I am sure that if you increase the frequency that you practice your serve, discover the right spots for your service motion(s), and develop a toss without spin, you will in no time become a tennis overdog! (Edited from an article in "Turbo Tennis" by Ron Waite, USPTR)

CHECKOUT THESE GREAT

TENNIS WEBSITES

<http://www.thaitennis.com> (in Thai only)

<http://www.tennisserver.com>

<http://www.atptour.com>

<http://www.cliffrichardtennis.org>

COMMITTEE CORNER

Your Tennis Section Committee will shortly be putting forward proposals for a revised format for the Monday evening Team Practice, to better suit the objectives of the Tennis Section and make participation more meaningful in practice/improvement terms. Work is ongoing on the upgrade of existing Tennis Section trophies, and on the acquisition of new, modern trophies to be presented to the winners of our major competitions.

Need Balls For Knock-Ups? Used tennis balls are available for purchase in the Fitness Centre at the BC. **Dunlop Fort** at Baht 40 per can, and **Volley** at Baht 30 per can of 3 balls.

RELAXED REGULARS

Happiness is doing nothing too important!

PLAY AWAY!
Sunday Afternoons - Silom Room

Play time for children, jointly organised by the British Club and Kids Care.

Lots of interesting activities followed by a movie. No charge for this event. Starts at 2 o'clock.

ART ATTACK CLASSES
Saturday Afternoons

Vanessa Christian is organising this creative and diverting activity for the budding artists amongst Members' offsprings from 1.30pm – 3.00pm every Saturday.

B5000,- for 10 weeks

Please register at reception

LADIES'S NIGHT
Tuesday Evenings - Churchill Bar

From 6.00pm til midnight, ladies can enjoy any of our cocktails for B 80 only.

BRIDGE
Tuesday Evenings - Churchill Bar

We continue to enjoy a friendly game of Bridge every Tuesday evening in the non-smoking area of the Churchill Bar. Refer to the Caldendar page for contact details.

GENTLEMEN'S SPOOF
Tuesday Evenings - Churchill Bar

Join the gents on Tuesdays for this spiffing spoofing bar game.

BAR ACCUMULATOR
Wednesday Evenings - Churchill Bar

Every member (and spouse) has the chance to win the every-growing cash prize. All you have to do is be in the Bar when your membership number is drawn from the hat. You can't win if you're not there!

DARTS
Wednesday Evenings - Churchill Bar

Join the lads and lasses every Wednesday evening in the bar for a friendly game of 'arrows'. Everyone is most welcome, regardless of whether you can hit the board!

CHILDREN'S MOVIE NIGHT
Friday Nights - Silom Sala

No charge for the kids. Starts at 7.00pm

SPORT'S UPDATE

Fitness for all ages

**JUNIOR CRICKET EVERY FRIDAY,
(STARTED 13 SEPTEMBER 2002)**

Time: 4.30pm – 6.30pm

Venue: Back Lawn – Cricket Nets

Charge: B 3,000.- for 10 lessons

Trainer: Mr. Brian Wiggins, qualified Australian coach

**JUNIOR TENNIS: FRIDAY AFTERNOON
(STARTED ON 6 SEPTEMBER 2002)**

Beginners age between 5 and 8 3.30pm – 4.00pm B 3,000.-

Intermediate age 9 – 11 years 4.00pm – 5.00pm B 4,000.-

Advanced: age 12 – 16 years 5.00pm – 6.00pm B 5,000.-

Coach Zubin and Piyant Engineer.

JUNIOR SQUASH (EVERY FRIDAY)

Time: 4.30pm – 5.15pm mini squash 5 – 7 years of age

Time: 5.15pm – 6.00pm Junior Squash 8 – 10 years of age

Venue: Squash Court Number 3

Charge B 1,900,- for 10 lessons

Trainer: Khun Narongrit, Profesional Level 1 trainer

**JUNIOR SWIMMING WITH THE
BANGKOK DOLPHINS**

B 3,000,- for 10 lessons, schedule as per October *Outpost*

TEAKWONDO

Every Sunday

Time: 10.30am – 12.00nn

Venue: Squash Court Number 3

Charge: B 1,800.- for 10 lessons

AQUA AEROBICS

Every Tuesday and Thursday

Time: 10.30am – 11.30am

Venue: Main Pool

Charge: B 2,500 for 10 lessons.

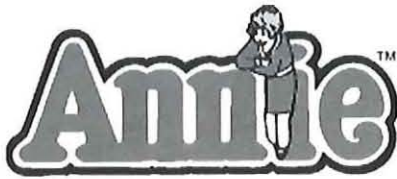
Trainer: Els van den Broecke

Bangkok
COMMUNITY
Theatre

invites

**YOUNG
PERFORMERS**

to audition
for the March 2003
production of the
Hit Broadway Musical



English-speaking boys and girls of all nationalities, aged 8-16 years old, are invited to audition for BCT's March 2003 production of "Annie!"

We are seeking a confident young singer/dancer to play the title role of Annie, as well as a small number of talented boys and girls to play orphans. All must be fluent English speakers, able to act, sing, and have some dance/movement or gymnastic experience. Annie and the orphans must appear to be 7 to 12 years old on stage.

Auditions will be held at 2:00pm on Sunday, Nov. 10th, 2002. Please contact ange@loxinfo.co.th or 02-258-8495, or audrey@loxinfo.co.th or 02-259-2848 for more information and to make an appointment for auditions.

Adult Auditions will be held in December. Please check the BCT website (www.bct-th.org) for details closer to the date.



The Neilson Hays Library and
The British Club
Present



*"A Children's Afternoon
Of Enchantment"*

On Sunday 10th November 2002
Event time from 1 - 5 p.m.



Featuring THE LITTLE PUPPET THEATRE with:
"The Nutcracker"



Show times are:

1:00 p.m., 2:00 p.m., 3:00 p.m., and 4:00 p.m.

Admission: 200 Baht

Please note: admission to show limited to ticket-holders ages 3 years to adult only. Children must be accompanied by an adult.

PLUS lots of fun back-lawn activities such as: balloon typhoon, great crafts, cake decorating, clowns, games, face painting, and much, much more!. Refreshments also for sale.

Infant/toddler siblings under 3 years of age may enjoy the back-lawn activities and an airconditioned play-room for a nominal fee of 100 Baht.



Tickets should be purchased in advance from The British Club, 189 Surawong Road. Tel: 02 234-0247, Fax: 02 235-1560
Parking available at the Narai Hotel



This is a fund-raising event for the Neilson Hays Library children's section. Thank-you for your support.



Dulwich International College



British education at one of Asia's finest boarding schools



**Co-educational day and boarding...Excellent purpose-built facilities...Close links with Dulwich College, London...Active, caring boarding programme...Safe, beautifully landscaped campus...From 18 months to 18 years old...Nursery to Year 13...IGCSE and IB...Small class sizes...Boarding from 9 years old...New Primary School...
Only 80 minutes from Bangkok!**

Dulwich International College is an IB World School, accredited by WES, and a member of ECIS, FOBISSEA and COBISEC

Bangkok: tel. 0 2512 0466-7, fax. 0 2512 0468; Phuket: tel. 0 7623 8711-20, fax. 0 7623 8750

Email: info@dulwich-phuket.com

<http://www.dulwich-phuket.com>

SPEAK THAI with CONFIDENCE



Learn to speak, read and write Thai with a personal Thai Teacher

Jentana & Associates has been successfully teaching Thai Language To foreign business people and visitors to Thailand for over 18 years.

Contact Jentana for more information on study options and fees.

Jentana & Associates

5/8 Soi Sawatdii Sukhumvit 31
Klongtoey-Neua, Watanna,
Bangkok Thailand 10110

Tel: (66-2) 260-6138-9 Fax: (66-2) 259-8580

Mobile: (01) 808-5180

Email: jentana@loxinfo.co.th



GOLF SECTION

First Time for Everything!

HUA HIN WEEKEND AT LAKEVIEW

Day 1 British Club v Hua Hin Golf Society
Congratulations to the small team that made the journey to Hua Hin for our annual match against the Hua Hin Golf Society. This victory saw our captain break his duck to be captain of the winning side for the first time this season!

The British Club Golf Section beat Hua Hin Golf Society for the third year in a row, by 5 matches to 4 this time round - the format being Stapleford combined pairs matchplay. It was a very close result with Carol Ann Eastgate and Liz McKay recording the biggest winning margin of 5 and 4 in their match. It was truly a great day for Captain Phil Hall. As well as leading the team to victory; he sank an eagle on the short par 5 12th and earned an "eagles nest" of balls - 4 dozen to you and me. That should keep him going for a week or two!

Next year we hope to arrange two fixtures against our fellow golfers from Hua Hin - a home fixture as well as the regular away match.

DAY 2 CLUB DAY

Sunday saw 14 players compete in a Stapleford singles game over the Lakeview course. Karen Carter came out top with 40 points, from Dianne Bulow on 38 and Liz MacKay edging out Phil Hall for third place on countback, after both finished with 36 points.

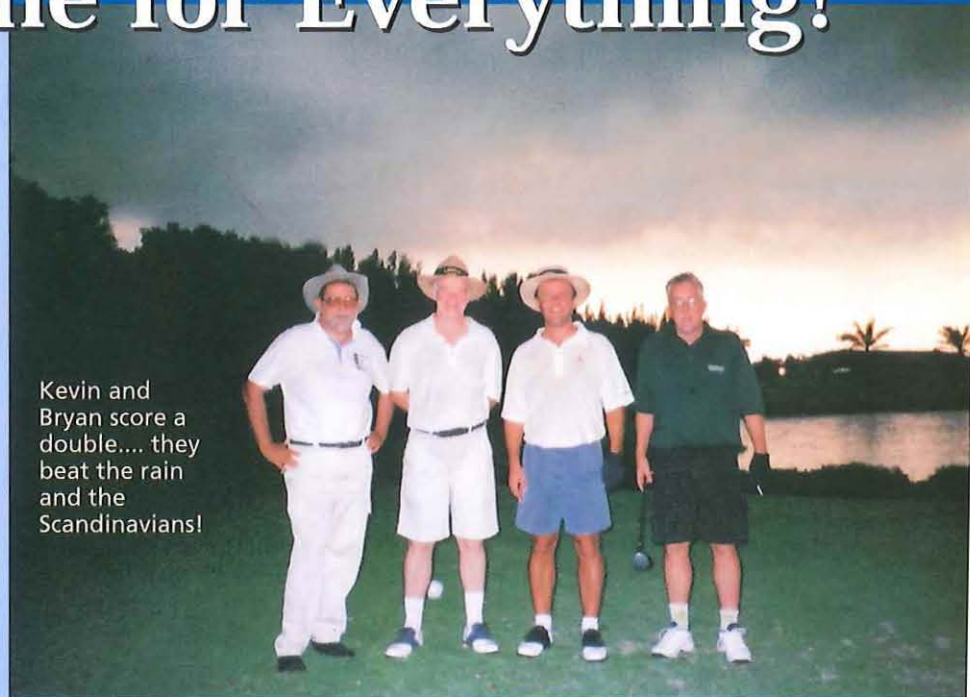
Near pins for Karen, Phil, Liz and our guest Bob Crawford. Long drives for Dianne Bulow and another guest, Chris.

SEPTEMBER MEDAL ROYAL LAD KRABANG

Only 20 players gathered on this gray September morning that turned into a cold and wet afternoon. Needless to say it made for a very quick round! The rain was so heavy that many of the less hardy locals gave up and left the course early, so the back 9 was like lightning (no pun intended).

It really was a miserable day and those who persevered were treated to a very un-Thailand-like sight in a drinks stop; Tom McKay wearing a jacket and nursing cups of

Kevin and Bryan score a double.... they beat the rain and the Scandinavians!



hot coffee with Dick Taylor & Ray Hughes trying to get warm!

Even after the round, there was no escaping the cold. Amazingly the restaurant was so cold that the waitresses were all wearing overcoats - the air-con was still going full blast in spite of the miserable weather. We had to open a window to warm the place up! The winners:

- A Flt Karen Holloway
- B Flt Tom McKay
- C Flt Ray Hughes

No reflection on Ray but there were only two entrants in 'C' Flt and he was delighted to win because it's his first ever 'pot'. Tom McKay has now won 4 'medals' this year and will soon have the complete set of pewter wine goblets!

LAM LUKA - THE RYDER CUP THAT WASN'T!

When the Ryder Cup proper was postponed last year following the events of September 11th, Bangkok's version of the Ryder Cup was also put on hold until this year. The European team was ready to do battle with around 40 players having signed up for the event. Unfortunately interest wasn't so great on the American side with only five players registered! The match was cancelled and we were left wondering if our Ryder cup T-shirts will ever see the light of day.

The British Club golfers still turned out in force at Lam Luka on 29 September so a UK v Rest of the World match was played. It was a good natured and very lighthearted battle. Most of us were so wrapped up in what was happening at the Belfry that the results of our own matches were of little importance! Diane and Harland Bulow, the only two American's surrounded by European supporters did their country proud. Harland played his round with the stars and stripes flying on top of his hat - a very brave man!

HOLE IN ONE FOR CAROL ANN EASTGATE

Congratulations to Carol Ann who got her first ever hole in one at the Par 3 third hole at Lam Luka using a 5 wood. You could hear the cheering all round the golf course! As the first British Club golfer to get a hole in one this year, Carol Ann wins an Omega watch. Well-done Carol Ann! (Dick Taylor also holed



Karen and Andy celebrate victory with a well-earned beer.

GOLF SECTION

in one earlier this year but he didn't quite time it right (once again, no pun intended). He scored his ace just before the Omega sponsorship was announced!) With our own matches over, everyone was itching to catch up with events at the Belfry. A Bar-B-Q had been laid on for us at the British Club and beer and wine were free flowing as events unfolded on the big screen.



Jo proves popular with the Scandinavian Captain!



BC Golfers with the Volvo Cup.

The atmosphere was electric as the nail biting singles matches reached their conclusion. Congratulations to Sam Torrance and the European Team for a gutsy performance and a fantastic display of match play golf. As Sam Torrance said 'they might have one Tiger, but we've got twelve lions'.

The British Club did a great job but unfortunately, a number of people who said they would be there didn't turn up. Please remember that the BCGS has to pay for these events so if you say that you will attend,

please make every effort to be there. If you don't, the club ends up having to foot the bill.

BRITISH CLUB TRIUMPH OVER THE SCANDINAVIANS

BCGS Captain Phil Hall's winning streak continued as the British Club Golfer's beat the Scandinavians 12 to 11 at Royal Lad Krabang.

As we arrived at the club, the car park was full of Volvos and there were golf bags everywhere. The Scandinavians had turned out in force for this annual fixture, as had the British Club golfers. In fact, as the draw

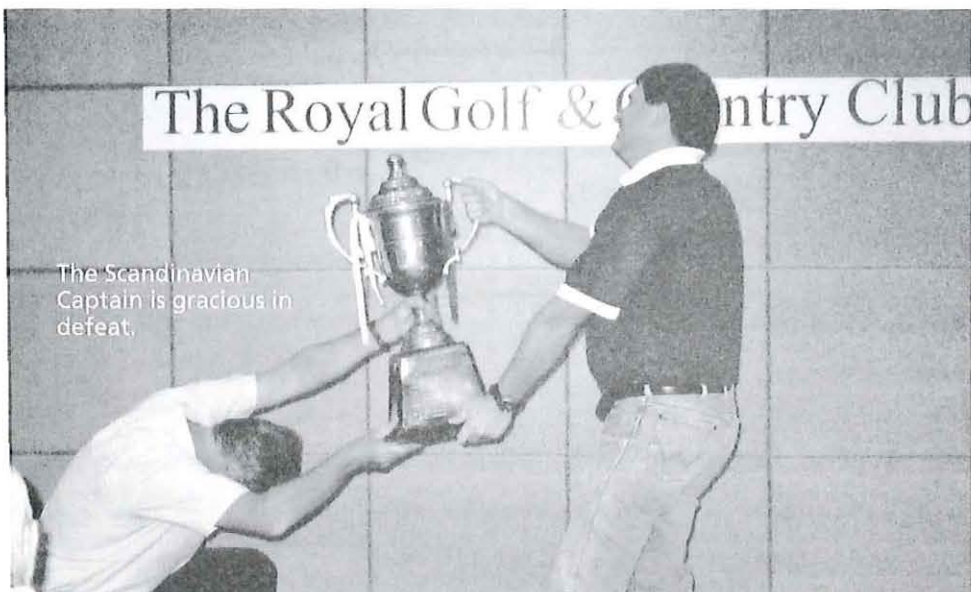
was completed it was clear that the Scandinavians were outnumbered and some of the British Club players became Danish, Swedish, Finnish, Icelandic or Norwegian for the day.

The format for the day was singles match play. There were some very close matches going all the way to the eighteenth hole and there were some not so close matches! Brian Brooke enjoyed the biggest winning margin on the day beating his opponent 8 and 7.

We were very lucky to finish the round as the storm clouds gathered and lightening skirted the course. For the first time in British Club history, there was an eight ball out on the course as the par 3 17th hole was played. We'll try anything just to complete our round! The final groups were playing near darkness but all matches were completed before the heavens opened.

Jo Goodliffe picked up two technical prizes, the ladies long drive and a near pin. Andy Flynn won the men's long drive. The rest of the technical prizes went to the Scandinavians. I would mention them by name but have no idea how those names are spelt!

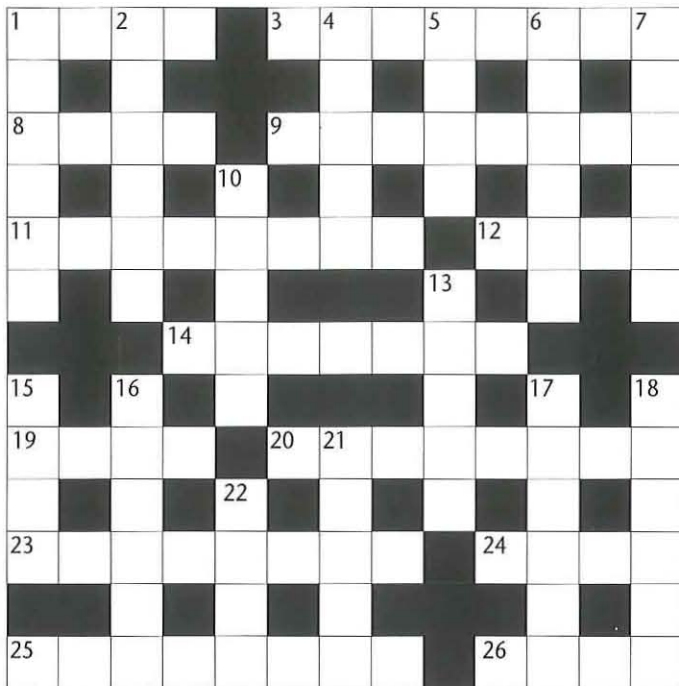
Congratulations to all the British Club players for a great performance. We look forward to retaining the cup next year.



The Scandinavian Captain is gracious in defeat.

CROSSWORD

How General is your Knowledge?



Compiled by Margaret Miller

ACROSS

- Spill the beans - about a Swiss hero?
- He made the first solo flight across the Atlantic in 1927.
- "Render ____ Caesar the things that are his." (Gospel of St. Matthew)
- He sticks to something or someone.
- Nationality of the first man on the moon.
- A printer's instruction.
- William ____, winner of the Nobel Prize for Literature, 1983.
- It's the last word!
- In the 1924 Olympics Harold Abraham won a gold for Britain as a ____.
- The Australia Federal Government moved here in 1929.
- The USA helped Europe after World War II with the Marshall ____.
- It declared independence from Britain - illegally! - in 1965.
- One of Britain's Queens Regnant.

DOWN

- USA Vice-President who became President.
- Martin ____ king - assassinated in 1968.
- Here became an independent State in 1947.
- "A ____ of dreadful note." (Macbeth)
- World War I ended at this hour, day and month.
- Derogatory term for the tabloid press.
- This USA President resigned.
- She got her gun!
- Sign of the Zodiac for June/July.
- Show bias - for a flimsy garden shed?
- One of the three leaders who met at in 1945.
- A World Cup winner in 2000.
- Around Paris for a Zoroastrian in India!
- Peel off for a football wizard.

Solution to October crossword



**FROZEN
PENSION
IN THE U.K.?
LIKE TO KNOW WHAT YOUR
OPTIONS ARE?
IT'S SIMPLER THAN YOU THINK**

For further details and a free analysis call Gavin Broad
on **252 8405**, alternatively fax this form to us on **253 9500**.

Name: _____

Tel: _____

Fax: _____

Address: _____

73/8 Soi 4, Sukhumvit Road,
Bangkok 10110, Thailand

Tel: 252 8405 Fax: 253 9500

Email: invest@portsmouth-mann.com



FRIENDS PROVIDENT

————— *One-stop shopping for life assurance and pensions* —————

BC SPECIAL EVENT

Wildlife Education Tour to The Annual Lopburi Monkey Banquet

This is a one day trip, just a short journey from busy Bangkok that will bring you to the ancient city of Lopburi, famous for the monkeys that live in the centre of the town. Every November a local businessman hosts a banquet for these monkeys that has become world famous.

The trip will take place on Sunday, 24 November, 2002 and is one not to be missed! The very capable and well-informed Leonie Vejajiva (of Animal Planet fame) will be your tour leader.

8.00am Leave the Club by air-conditioned bus (snacks will be provided)
9.30am Arrive Lopburi Inn Resort to freshen up
10.00am To San Phra Khan Shrine to see the monkey banquet. This will continue in shifts until 4.00pm
12.00pm Buffet lunch at Lopburi Inn Resort
1.45pm Leave the resort to visit Lopburi Zoo
3.00pm Board the bus to return to Bangkok
5.00pm Arrive at the British Club



The price of B 2,100 includes travel, the banquet, all (human) snacks and lunch, entrance fees and insurance. There is a minimum requirement of nine people to sign-up, but luckily there is no maximum number! Contact the British Club to make your reservations.

All proceeds from this trip will be donated to the World Wildlife Fund.



New Members' Night

The Churchill Bar is the place to be for new Members, and what a happy crowd we had at the last New Members' Night back in September. Newcomers to the Club came to meet each other over a drink (or two) and introduced themselves, via Outpost, to the full Club membership. This is always a good evening and all Members are welcome to come along (remember, as it's always held on a Tuesday, it's also Ladies' Night).



LEIGH & KAREN TAYLOR

British

"Great facilities for the family and it's a welcome oasis in steamy Bangkok" is how the Taylors described the Club, and quite right too! Leigh is here with SSL Healthcare (Durex) and will probably be kept very busy plying his wares! New to expat life, Leigh and Karen are eager to rediscover Asia (they backpacked around before having their two kiddies) and to travel to as many countries in Asia Pacific as possible. They both enjoy swimming and skiing and adore food and wine and plan to sample as much of both as possible.

ANDY COLE & KATY LANGDON

Australian

Andy, working for Worley, and Katy, a paediatrician, expect to be in Thailand for three years (they spent three years in England before coming here). They have three children, ages 3, 6 and 9. They both play tennis and golf and also scuba dive. Katy is the author of the Medical Section of the Bangkok Guide and is involved with the Nelson Hayes Library.



Katy is pictured with Peter Gary on her right and Committee Member Angela Daniel on her left.



MARK & CARLA WILLIAMS

Australian & New Zealand

A lively couple, Mark is the General Manager for Orica or Chai International

Development, take your pick and Carla keeps her life simple by staying home! They have lived in Vietnam and as expats in New Zealand. They have two babies and list 'children' as their non-sporting hobby!!! Mark plays rugby and dives and Carla is an avid tennis player. They both do taekwondo, so if you happen to bump into them, be very nice!

SAM QUBROSI & JOHANNA EVANS

Australian

You may well be thinking that Andre Agassi has joined the Club, but you'd be wrong - it's only Sam on the tennis courts with his wife Johanna! The couple used to live in Hong Kong and Sam is here working with Citibank. Sam and Johanna enjoy a game of snooker now and then and are both students of the martial arts (I wonder who wins in an argument!).



GARETH HUGHES & JANICE EATON

Welsh & Australian

Gareth and Janice have been in Thailand for nearly three years and expect to be here a long time. Gareth is with RSM Nelson Wheeler and Janice does a lot of voluntary work. Neither of them are particularly sporty (Gareth plays golf and Janice owned up to playing nothing), but they do enjoy restaurants, music, choirs, singing and humming. At the New Members' Night Gareth kindly showed up as a representative of the St. David's Society.

Basic Life Support CPR/ First Aid

Do you know that if a person stops breathing permanent brain damage can begin in as little as 4 to 6 minutes unless effective CPR has begun? Is your knowledge current for recent changes to detecting if a person is showing life signs? Do you know the resuscitation rates for an infant and an adult including chest compressions for CPR? What is a normal pulse rate for an infant, child and adult? Do you have a well-stocked first aid kit at home, office and auto? This CPR/ First Aid Certified course takes a total of 8 hours and is valid for two years. It is recognised worldwide. In today's world we must be more prepared to respond rapidly and effectively to crises.

We all would like to be able to help an injured person and maybe save a life should such a situation arise. Time does not wait during a crisis. YOU can make the difference between success and a lifetime tragedy.

This course is an internationally recognised training course for the single person responder conducting Basic Life Support emergency care as prepared by Emergency Medical Planning America Inc. Students learn by practicing the skills in the same priorities and approach as those used by professionals. This results in a continuation of care as the patient is passed on to a paramedic, nurse and doctor.

Emphasis is on the development of the Primary and Secondary Essential Skills of Patient Care for:

- Cardiopulmonary resuscitation (CPR) and the control of bleeding.
- Management of choking & shock.
- Assessment and treatment of illnesses such as heart problems, stroke, allergic reaction, asthma, hyperventilation, poisoning, diabetic emergencies and epileptic seizures.
- Assessment and treatment of injuries such as fractures and dislocations, head and chest injuries, neck and back injuries, lifting and moving of injured victims.
- Treatment for snake and spider bites, eye injuries, exposure to cold and heat, burns, and electrical injuries.



Who should take the course?

- Mothers and Fathers of infants and small children.
- Baby sitters and persons caring for the elderly or sick patients.
- Schoolteachers and sports staff.
- Office staff and supervisors.
- Professional chauffeurs.
- Persons located more than 5 minutes from a professional medical assistance.
- Scuba divers continuing their diving education.

What is included with the course?

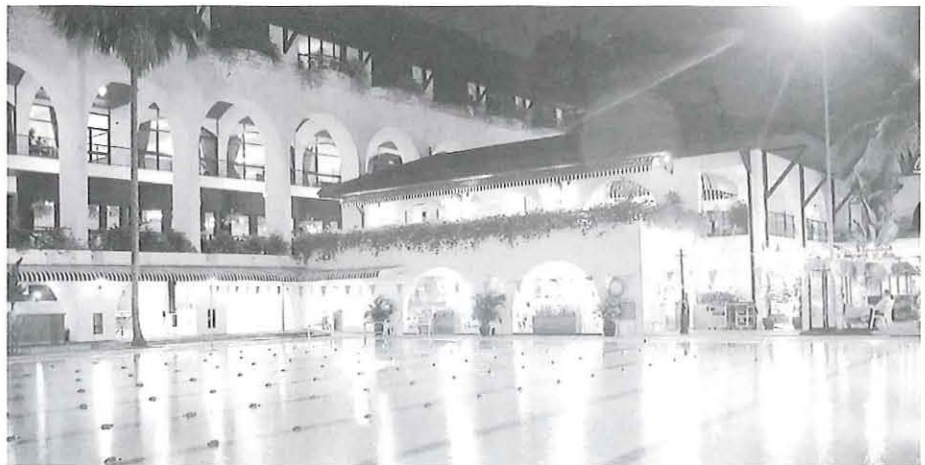
- Medic First Aid Emergency Care Reference Manual and Visual workbook.
- Internationally recognised personal certification card.
- A personalised wall certificate.
- A manikin to practice realistic CPR in class.
- Video to see and learn procedures and skills in class.

Peter Gary

For class scheduling, contact me at the following: Tel: 02 634-7796-7 | Mobile: 09-117-5889 | Email: masterlifeguards@hotmail.com

RECIPROCAL CLUBS

Great News From The Tanglin Club, Singapore!



The Tanglin Club has long been a much visited reciprocal club, and now they have announced that reciprocal members can also use their guest rooms (previously a jealously guarded perk of Tanglin members!). There are 16 spacious rooms, all en suite, with pool view rooms at S\$190.55 and plant nursery view at S\$169.95. Due to the limited number of rooms available, members are advised to book early for this very relaxed alternative to regular hotels.





Exclusive for expatriates!

Do you need to top up your life insurance and critical illness insurance cover during your stay in Thailand ?

You may have some temporary need for additional life insurance and/ or critical illness insurance during your posting in Thailand. However, it is difficult to arrange for additional insurance cover with your usual insurer whilst you are overseas. All you need is a yearly renewable term life insurance cover during your posting here, with the convenience of local service but the security of an international insurer. You also want to obtain the cover at premium rates comparable to that you can obtain at home but has discovered that life insurance and critical illness insurance cover is comparatively much more expensive here in Thailand than at your home country.

Zurich National Life then has the perfect solution for you. We have developed a product specific to the expatriate market where the policy term is only one year and guaranteed renewable each year at your discretion. The requirement for health check is much less stringent and the premium rates are up to 60% cheaper than comparative premium rates offered in Thailand.

For more information, please contact our special authorized representative for the expatriate community;

Mr. Jerome Kelly
Managing Director
Lawton Asia Co.,Ltd.
Tel: 0-2679-1400
Fax: 0-2679-1401
Mobile: 0-1809-1809
E-mail: jerome@lawtonasia.co.th



Zurich National Life Assurance is a joint venture of Zurich Financial Services of Switzerland and National Financial Services Group of Thailand. Zurich operates in over 65 countries and has over US\$ 485 billion of assets under management. It has over 129 years of experience in the insurance field.

Zurich National Life Assurance Co.,Ltd.
Glas Haus Building, 1 Sukhumvit 25, Wattana, Bangkok 10110 Tel : 0-2661-7888

PLOENCHIT FAIR GRAND RAFFLE 2002

As is tradition, The Bangkok Chamber of Commerce in Thailand is selling tickets throughout the community for the Ploenchit Fair Grand Raffle, and what amazing prizes they have this year! Check them out below, decide what you fancy winning and buy loads of raffle tickets. As with all lucky draws, you can't win if you don't buy, and the more you buy, the better your chances. End of the day, it's all for an excellent cause!! Raffle tickets will, of course, be available at the Ploenchit Fair if you can't get your hands on any beforehand.

1. Two world Traveller plus return tickets Bangkok to London, donated by British Airways PLUS two-night weekend stay in an Executive room for two persons including English breakfast at the London Hilton on Park Lane, donated by Hilton International UK PLUS two tickets to a Leeds United Home game with VIP game day hospitality and a behind the scenes tour, donated by Leeds United Football Club.
2. Two Economy Class return tickets to London, donated by Thai Airways International Public Company Limited.
3. One round trip, Economy Class from Bangkok to London, Manchester or Birmingham via Dubai (The winner is entitled to an upgrade to Business Class subject to seat available on departure.) donated by Emirates PLUS accommodation at the Dusit Dubai, donated by Dusit Hotels and Resorts.
4. One Evergreen Deluxe Class return ticket to Vienna, donated by EVA Air.
5. One Antioxidant Lifestyle Evaluation and 3- month nutraceuticals by Vitallife Wellness Center, total value Baht 25,300 donated by Bumrungrad Hospital.
6. Two comprehensive physical check-up Gift Vouchers, total value Baht 23,000, donated by Bumrungrad Hospital.
7. A complete Dunlopillo Comfort Double Bed Set including mattress and divan base, donated by Dunlopillo (Thailand) Ltd.
8. One return economy extra class to Singapore donated by Scandinavian Airlines PLUS two-night stay inclusive of daily breakfast at the Shangri-La Hotel Singapore, donated by Shangri-La Hotel Singapore.
9. One return tourist class ticket to Singapore donated by Finnair PLUS two-night weekend stay for two in an executive suite including breakfast at the Regent of Singapore, donated by the Regent of Singapore.
10. One return tourist class ticket to Hong Kong, donated by Finnair PLUS two-night weekend stay inclusive of daily breakfast at the Kowloon Shangri-La Hotel, donated by Shangri-La Hotel Kowloon.
11. Two roundtrip tickets to Phuket donated by Bangkok Airways Co., Ltd PLUS two-night accommodation at Le Royal Meridien Phuket Yacht Club, Nai Harn Beach, donated by Le Meridien Thailand Resorts.
12. Two roundtrip tickets to Krabi donated by PB Air PLUS two-night stay at Rayavadee Premier Resort Krabi including breakfast and transfer in and out, donated by Rayavadee Premier Resort Krabi Thailand.
13. Two roundtrip economy tickets Bangkok to Chiangmai on Thai Airways PLUS two nights double accommodation at the Westin Riverside Plaza, including breakfast and transfers, donated by DTC Travel Co., Ltd.
14. One gallon bottle (4.5 litre) of Johnnie Walker Red Label Scotch Whisky, donated by Riche Monde (Bangkok) Ltd.
15. Two nights weekend stay for two persons in a Suite including Sunday Brunch at the "Heights Café Restaurant", donated by The Pan Pacific, Bangkok.
16. Three gift vouchers worth Baht 3,000 of clothing, donated by Raja's Fashions.
17. Sunday Brunch Buffet for two at "Tiara Restaurant", donated by the Dusit Thani Hotel.
18. Buffet Lunch or Dinner for two at "Pavilion Restaurant", donated by the Dusit Thani Hotel.
19. Buffet Lunch for two at "Chinatown Restaurant", donated by the Dusit Thani Hotel.
20. Two gift vouchers for buffet lunch for two persons at "Spasso", donated by Grand Hyatt Erawan Bangkok.
21. Two gift vouchers for buffet lunch for two persons at "The Dining Room", donated by Grand Hyatt Erawan Bangkok.
22. 1 night accommodation at Amari Rincome Hotel, Chiang Mai, donated by Amari Hotels and Resorts.
23. 1 night accommodation at Angkhang Nature Resort, Doi Angkhang, donated by Amari Hotels and Resorts.
24. Buffet lunch for two at the Coffee Shop, Amari Watergate Hotel, Bangkok, donated by Amari Hotels and Resorts.
25. Buffet lunch for two at the Coffee Shop, Amari Boulevard Hotel, Bangkok, donated by Amari Hotels and Resorts.
26. Buffet lunch for two at the Coffee Shop, Amari Atrium Hotel, Bangkok, donated by Amari Hotels and Resorts.
27. One lady's bag donated by Swiss International Airlines.
28. One lady's bag donated by Swiss International Airlines.
29. One lady's bag donated by Swiss International Airlines.
30. One lady's bag donated by Swiss International Airlines.
31. One lady's bag donated by Swiss International Airlines.

Asianna Oriental Co.,Ltd.

TRAVEL SERVICES

AIR TICKET

HOTEL RESERVATION

PACKAGE TOUR

VISA SERVICE

TRANSLATION

BIKE & CAR RENT.

759 Sukhumvit Road
Between Soi 41-43, Klongtan
Wattana, Bangkok 10110 Thailand
Prompong BTS, next to Tops supermarket
Tel: 0 2258 7281 , 0 2260 7798

Fax: 0 2662 4643

Email: asianna_oriental@yahoo.co.uk

Out of hours call:

0 1312 5537 / 0 1732 6625

Open 7 Days a week Busines hours 08:30 - 21:00

British Community in Thailand Foundation for the Needy

(under the auspices of the British Embassy, Bangkok)

Ploenchit Fair - Saturday 23rd November 10.00 am - 10.00 pm Sanam Suapa - Dusit Palace - Royal Plaza

UP-DATE NEWS

This year's Ploenchit Fair kicks off with the Opening Ceremony at 10.00 am with the Pipes and Drums of the 1st Battalion Scots Guards

WHAT'S NEW

With the compliments of BTS, there will be a free shuttle bus every 10 - 15 minutes to the Fair from Phayathai station. From early November complimentary souvenir maps - BTS Ploenchit Fair - will be available at all skytrain station ticket windows, major hotels, shopping malls and tourist offices, giving all the programme details of the Fair as well as a road and skytrain map. Parking in and around Royal Plaza has been agreed, subject to unforeseen Royal commitments.

WHAT'S NEW FOR KIDS

As well as the Ferris Wheel, Rocket, Carousel, Jumping Castle and Climbing Wall, we will have a bungee trampoline for the adventurous and a special Children's Corner area with Father Christmas, Pony Rides, Colouring Competition and activity centre. Lop Buri Zoo will feature 'petting animals' and tractor and trailer rides will ferry you around the Fair. Watch out for Dr. Penguin's Magic Circus performers, Clown Eckie and M&M's mascots!!

WHAT'S NEW FOR DADS

All the old favourites, Coconut Shy, Darts, Tin Can Alley, Water Splash, Paintball, Golf, Shooting Gallery and Football Shoot - not to mention whisky galore at our Bottle Stall and the Nestlé Pirates Treasure Island where every ticket wins a prize. Castrol's motorbike raffle is back and Mazda is offering a preview of premium cars!

WHAT'S NEW FOR MUMS

Over 40 shopping outlets in our Petticoat Lane area to start your Christmas shopping - Boots our favourite High Street chemists with

sale offers - browse in our used Book stall, treasure hunt in Granny's Attic or play Bingo where the major prize will be Baht.50,000 plus a gallon bottle of Johnnie Walker. Visit our Hospital outlets and check-out your family's health or try Wat Po's traditional Thai Massage in the cool shady section of the gardens and have a relaxing foot massage.

WHAT'S TO EAT FOR

ALL THE FAMILY

What's not! 'A Taste of Asia' from the Pathumwan Princess, Angelini's pasta from the Shangri-La, Bobby's Arms for our famous fish and chips, Mrs. Balbir's Indian specialities, Yorkies Pork Pies, Mushy Peas and Hot Dogs, Thai food vendors, Au Bon Pain, Harrow School's Cream Teas, Starbucks, Dunkin' Donuts, Wall's ice cream, popcorn, candyfloss and Pepsi.

WHAT'S TO DRINK

The Crown and Anchor Bar, O'Riley's Wine Bar, the Londoner and Pepsi will provide all the liquid refreshment necessary throughout the day in the Entertainment area where our International stars will be on stage from 11.00 am through 'til late.

WHERE DOES THE MONEY GO?

The British Community in Thailand Foundation for the Needy is an entirely voluntary committee, so all the money raised at Ploenchit Fair is distributed to Thai charities. All projects undertaken are fully supervised by us and the Committee meets monthly to follow through on projects and assess new applications for assistance. Some of our allocations for 2002 include

Camillian Aids Hospice

A new wing for AIDS patients in this centre in Rayong, a 50% venture with the Dutch community in Pattaya. 600,000

Thanayaporn Reception Home For Girls

This home is for girls 5-18 years under Child Welfare Protection - as there are no schooling

facilities whilst they are being assessed, a basketball court plus recreation ground has been constructed. 360,000

Good Shepherd Sisters

Bangkok - A year's supply of materials, sewing threads and equipment for the centre in Din Daeng that employs over 100 women from the slum area 450,000

Nong Khai - Construction of a new building for bag-making and embroidery centre that trains 400 young girls annually. 440,000

Chiang Rai - Youth centre - emergency repairs to the roof 51,000

Karen Hill Tribes Trust

Baan Mae Oompai Nua - Water and irrigation project for 65 families 170,000, Baan Mai Oo Khor Noi - Build a filter tank at water source for clean water in the rainy season 60,000, Baan Ratchawadee Home For Mentally Handicapped Children, Water tanks and cookery equipment for training courses 87,000

Huay Pong Home

Mataput, Rayong - Rebuilding a boy's dormitory in this home for 200 children and purchase of 100 blankets and bedding. 300,000

Project Life

Nong Mek Village, SaKaew - Silk worm and weaving project to generate income for Rural Woman's Development 45,000

St. Joseph's Home

Betong - Year's payment towards the costs of food and medicine plus 30 sets of iron beds, mattresses, sheets and pillows for this home for the aged and orphaned children. 600,000

Renn Fuller Low Vision Centre

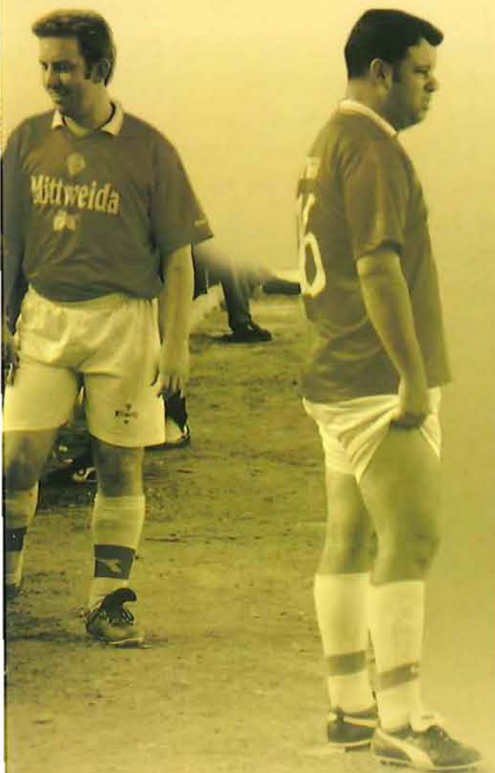
Chiang Mai School for the Blind - Teller Activity Card System from USA for Acuity assessment for children with low vision from the age of 3 years 105,000

SOCCER

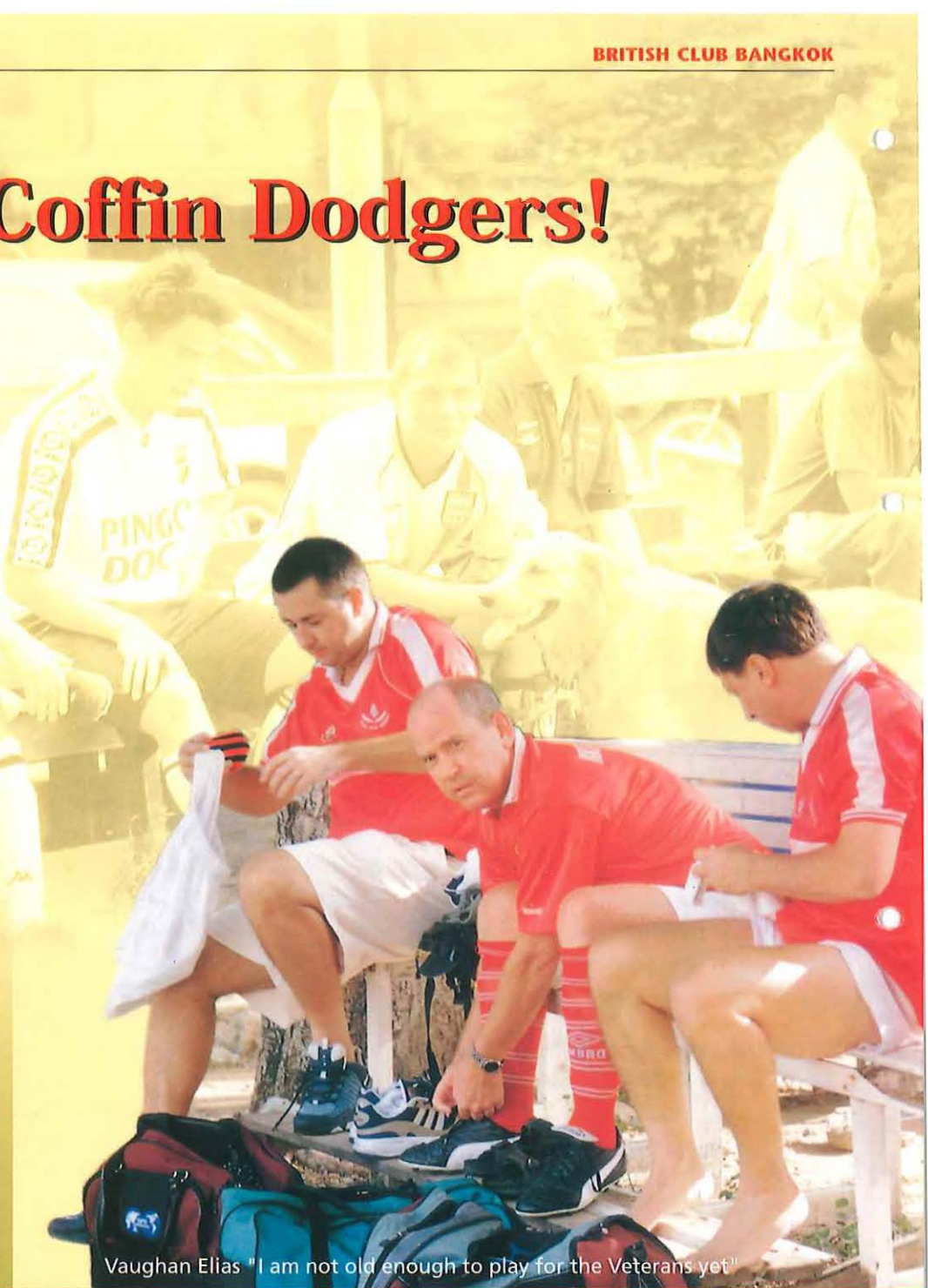


Football legends Colin Hastings and Greg Watkins debate a referee's decision

BC Coffin Dodgers!



Santa Fe super-sub Danny Poole "It's not fair, they won't let me play"



Vaughan Elias "I am not old enough to play for the Veterans yet!"

The "new" look BC Veterans are up and running (almost!). The BC Football Section now fields three 11-a-side teams at weekends, having introduced by public demand (a load of old blokes) the BC Veterans Team comprising of players over 35. In fact most of the squad are more like over 45's, but the idea is to enjoy our football at a less hectic pace than the Social (Casuals) League and give the younger lads a chance to see if they can improve the League performance of the BC.

So far in their four matches the BC Veterans have won two and lost two against illustrious teams from the British Embassy, BCCT and Harrow School (staff, not pupils). It's wonderful to see old BC maestros such as Nigel Oakins, Ray Hughes and Matt Duke gracing the pitch again with their silky skills.

In the meantime our new improved Social League team are on an unbeatable run, scoring a hatful of goals (unheard of from a BC team) and playing some decent football to boot. Thanks are due to Mel Birkinshaw and Bruce Darrington for getting this team back on track. Our first team is still under wraps but captain Simon Mackay assures us that they will be ready for the League start in November after their secret training sessions.

We welcome several new BC Members to the Section this month, including Max Phelps, Chris Jolly and Travis Parmenter. There must be more of you out there itching to lace your boots on again. Come and join us please. Either check out the notice board for Committee contact details or just show up any Tuesday evening at the BC for "training" at 7.00 pm. All ages and skill levels are welcome.

by Martin Conisbee

EVOLUTION

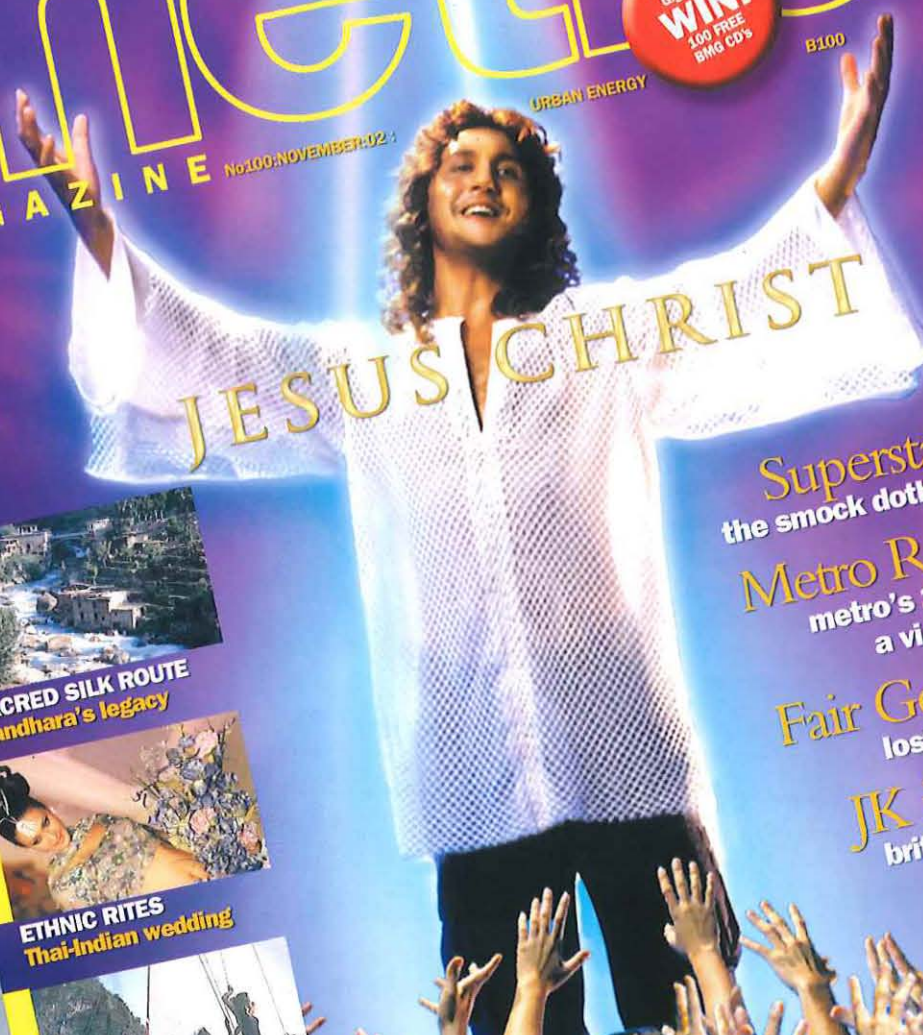
metro

MAGAZINE No.100: NOVEMBER 02

Paul Van Dyk
Gig Tickets
WIN!
100 FREE
BMB CD's

URBAN ENERGY

B100



JESUS CHRIST

44% bigger
32 more pages
new look
new attitude
same price
**subscribe
now!**

Superstar the man in the smock doth rock bangkok

Metro Retro marking metro's 100th issue with a view from the past

Fair Go how we almost lost the ploenchit fair

JK in BKK funky brit bad boy jamiroquai jams for the fans



SACRED SILK ROUTE
Gandhara's legacy



ETHNIC RITES
Thai-Indian wedding



WET DREAMS
Adrift around Thailand

metro:urbanenergy

HARRY POTTER LOI KRATHONG CHEAP FARES

BANGKOK FASHION WEEK OPEN AIR THEATRE

WHAT'S ON

Start Training for the Party Season!

GUY FAWKES NIGHT

Sunday, 3 November 2002 at 4.30pm

Join us for this excellent event. The Club will close at 3.00pm and will re-open at 4.00pm for the Members attending the Guy Fawkes Dinner, Bonfire and Fireworks display. BBQ will start at 5.00pm followed by a bonfire in the back car park and a beautiful fire works display.

Adults B 575, Children under the age of 12 years B 400

CLUB MANAGER'S NIGHT

Wednesday, 6 November 2002 at 6.30pm

This is a great evening to catch up with fellow members in the Churchill Bar, especially as there will be a complimentary curry buffet.

WINE TASTING

Friday, 8 November 2002 at 7.00pm

A discriminating selection of wines from New Zealand, sponsored by Prestige Wines Co., Ltd., will be available for tasting in the Wordsworth Lounge.

A delicious complimentary Cocktail Buffet will be provided.

NUT CRACKER PUPPET SHOW

Sunday, 10 November

A wonderful afternoon for all the family on the back lawn! Not only this great Christmas puppet show, but also lots of childrens' activities as well. Show times are 1.00, 2.00, 3.00 and 4.00pm in the Club House and activities outside will commence at 1.00pm, so you can choose what to do when you want.

Price includes the show and all activities - ballon typhoon, stilt-walkers, clowns, crafts..... all manner of fun. Children must be 3 and over to see the puppet show (mainly because the room is very dark and a bit scary for little ones) but the back lawn is open to all. Food and drinks will be available on Members' accounts.

Price: B 200 for Members 3 and over, B 100 for under 3's

NEW MEMBER'S NIGHT

Tuesday, 12 November 2002 at 7.30pm

This is an excellent opportunity to meet new Members who have recently joined the Club. Sports Section representatives are usually

around for those of you desperate to sign up for the various Club teams! The Churchill Bar is the venue for this night.

BAR QUIZ

Friday, 15 November 2002 at 7.30pm

Come along to Lord's Dining Room and have an exiting evening with Quizmaster Rodney Bain.

Each team can have a maximum of 6 participants and there is a registration fee of B 100 per team player.

SURIN ELEPHANT ROUND UP

15 - 17 November 2002

An event not to be missed. The British Club has been travelling to see the celebrated Surin Elephant round up for more than a decade. At the show you will see elephants perform the most amazing tricks of balance and dexterity. The trip includes a trip to the Khmer Temple "Prasart Hin Phanon Rung." Charge: B 4,950 for adults, B 3,950 for children below the age of 12 years and B 2,000 for children below the age of three.

Price includes travel by train (2nd class) to Surin, Breakfast, Lunch and Dinner, transport by coach and entrance to show and temple tour included.

LOY KRATHONG CELEBRATIONS

19 November 2002 at 6.30pm

Experience the magic of Loy Krathong at the Club poolside. Enjoy a Thai style Buffet and Entertainment. Don't forget to bring a krathong or buy one from the Club at B 90. Dress up in your fanciest Thai costume and you could be the winner of a special prize. Price B 350 for adults and B 250 for children between 4 - 12 years of age.

MOVIE COMEDY CLASSIC

Wednesday, 20 November 2002 at 7.30pm

Featuring "On The Buses" with Reg Varney. B 250 including light supper buffet.

MONKEY BANQUET DAY TRIP

Sunday, 24 November 2002

An amazing opportunity to see monkeys having a feast. Leonie Vejajiva will be your guide and will give you all kinds of information about these cute animals. See page 17 for full details

CANADIAN FOOD PROMOTION

28 - 29 November 2002

in the Lord's Dining Room

Discover the flavours of Canada! Barry and the kitchen team will prepare an excellent selection mouthwatering dishes from Canada.

Charge B 600 per person for buffet dinner.

PHILIPINO CHRISTMAS CHOIR

Wednesday, 11 December 2002 at 7.15pm

This heart-warming performance will take place in the Suriwongse room. Before and after the singing we will serve Gluvine and other beverages on the front lawn.

Charge: B 350 for adults and B 195 for children between 3 and 12 years of age. Children 3 years and below, no charge.

ANNUAL CHRISTMAS BALL

Saturday, 14 December 2002 at 7.00pm

Cocktails on the front lawn, followed by dinner at 8.00pm on the back lawn. A 15 piece orchestra will entertain you during dinner followed by the swinging disco from Paul Jackson until the early hours in the morning. Reserve your tables early as this is considered to be the Club's best night of the year, and probably the best Christmas Ball in Bangkok!

CHILDREN CHRISTMAS PARTY

Tuesday, 17 December 2002 at 2.30pm - 5.30pm

Loads of kids' activities: pony riding, balloon typhoon, face painting, crafts and much more on the back lawn. Activities will commence at 2.30pm and at 4.30pm there will be a picnic on the front lawn. A visit from Santa and a gift for every child tops off this fun day.

Charge: B 395 per child

BRITISH CLUB SPORTS CAMP

16, 18, 19 and 20 December 2002 daily from 9.00am - 4.30pm.

The camp includes, tennis, squash, swimming, cricket, soccer, games, video, snacks and lunch.

B 850 per day or B 3400 for all 4 days.

WHAT'S ON

CHRISTMAS EVE DINNER**Tuesday, 24 December 2002**

The Lord's Dining Room is the place to be for this sumptuous Buffet Dinner, featuring a huge spread of Christmas Delights, International Food and a Thai corner. This is a great excuse to take the family out for a traditional British Christmas dinner.

Charge: B 850 per person, B 550 for children between 4 and 12 years of age and no charge for children of 3 years and under.

TRADITIONAL**CHRISTMAS SET LUNCHEON****Wednesday, 25 December 2002 from
12.00pm - 4.00pm**

This luncheon will be served either in the Lord's Dining Room or the Churchill Bar - your choice! There will be entertainment for the children with Clowns, a Puppet Show and a visit from Santa.

Charge: B 850 for adults, B 550 for children between 4 and 12 and no charge for children 3 years and under.

CHRISTMAS DAY DINNER BUFFET**Wednesday, 25 December 2002 at
7.00pm**

The Lord's Dining Room will be filled to bursting with traditional Christmas fare, International and Thai food. A great family evening with this delicious Buffet Dinner.

Charge: B 850 per person, B 550 for children between 4 and 12 and no charge for children 3 years and under.

NEW YEAR'S EVE PARTY**31 December 2002**

Dinner Cruise on the Royal Phraya Princess awaits you this year. Make your own way to River City Pier at 9.00pm and board for a 9.30pm departure.

Live Music, International Buffet Dinner, Firework Display at midnight...what more could you want? We will return to River City Pier at 0.30am.

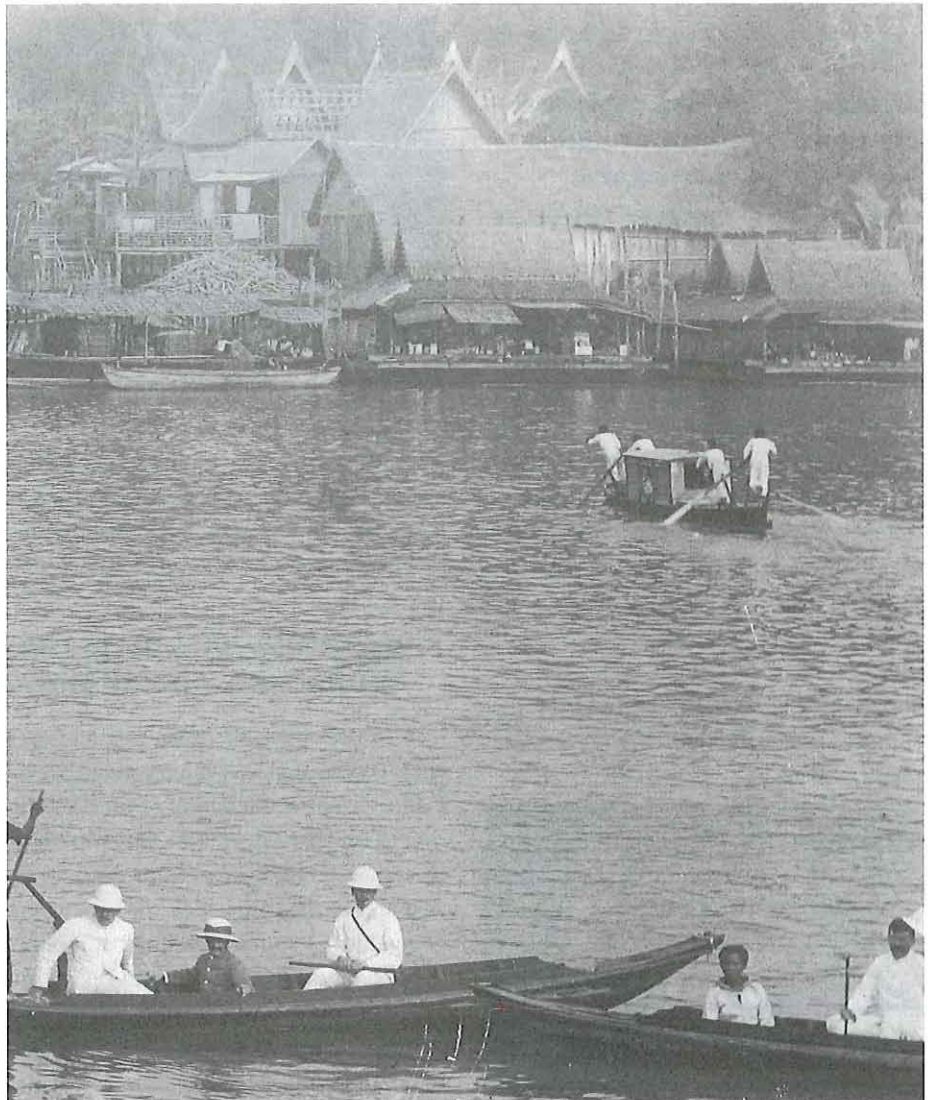
Charge B 2,995 per person inclusive of 2 hours open bar (standard pouring drinks only)

NEW YEAR'S EVE**WITH THE FAMILY****31 December 2002**

BBQ and Buffet Dinner for all the family, followed by a disco in the Suriwongse Sala and children's activities at the Silom Sala. Fireworks display at midnight finishes the night off.

B 1,100 for adults, B 550 for children 4 to 12 years and no charge for children 3 and under.

Bangkok Lecture



The National Museum Volunteers are pleased to present a lecture by Steve Van Beek on life in Bangkok over the past one hundred years.

What was Bangkok like in the year 1900? More particularly, how did the experience differ for women?

Experience old Bangkok with Steve Van Beek, author of *Bangkok Then and Now*.

Using photographs taken a century ago juxtaposed with pictures taken at exactly the same place today, he will show us how much has been altered in the past 100 years and, surprisingly, how much of 19th century Bangkok remains. Through reminiscences and fascinating stories from the 1900 editions of the Bangkok Times newspaper, he will help us relive the period, and instill both a nostalgia for a quieter age and gratitude that we don't have to deal with some of the challenges that faced early residents, especially women.

Lecture: Bangkok Then and Now: A Female Perspective

Speaker: Steve Van Beek

Date: November 14, 2002

Time: 10:00 am

Location: Auditorium, National Museum Bangkok
near Thammasat University
Naphrathat Road, across from Sanam Luang

Members and the public are invited, and admission is free. Coffee will be served from 9:30 a.m. For more information, contact Ms. Gerda Kassing at 258-8521.

NATIONAL MUSEUM VOLUNTEERS
P.O. Box 1305, Nana Post Office
Bangkok 10112

SQUASH SECTION

Victory for the Bouncing BC Boys

The 164th league ended on September 30.
The winners were:

- DIVISION 1 - DAVID EASTGATE**
DIVISION 2 - JAMIE HEYWOOD
DIVISION 3 - IAN WALTON
DIVISION 4 - CHARLES WHITELEY

British Club Wins The Dawee Cup for 2002
On Sunday 6 October the British Club Squash Section took on the Polo Club in this annual fixture for the Dawee Cup. At long last, after five barren years, we were presented with the cup after a 7-3 victory. The fixture had been delayed from its usual time in July for a number of reasons but it was worth waiting for. Our team of 10 players, plus reserves (and would you believe, supporters) were very pleased to regain the trophy, if only for the presentation, after a run of five defeats. It is always difficult for both Clubs to field their strongest squads and both sides had regular players missing.



Steve Bell and David Eastgate



Steve Bell and David Eastgate with the Tournament winners (Hong Kong Football Club First Team) and Plare winners (Hong Kong Football Club II)

Steve Bell, our Number 1, put up a good show against their national player Poowis, but it was always going to be tough against this talented youngster, Steve going down 0-3.

through to victory, all with convincing 3-0 victories. As Brian Palmer and Nick White had no opponents to play they had their internal league game instead with Nick, the winner.

Congratulations to all the players, reserves and indeed supporters who all played their part in this victory.

Nick Thwaites, at 2, demonstrated that he had overcome a recent injury with a 3-1 win over Charnchai. Ian Walton, who was called up at the last minute to play at 3, played very well and pushed Supich all the way before going down 3-1. Colin Hastings, at number 7, had an interesting match with Peeraporn, a former national player, who still showed great touch and control in his 3-0 win over Colin. Chris Browning, Peter Corney, Charles Whiteley and Steve Harvey steered us

The match was followed with drinks and an excellent curry buffet served on the front lawn. After the presentation was over we noticed Poowis disappearing into the distance with the large trophy to jeers of 'where are you going with the trophy?' Apparently the trophy always remains at the Polo Club. I am sure that next year the Polo Club will be really determined to regain the trophy on their own courts.

David Eastgate.

Hellos and Goodbyes

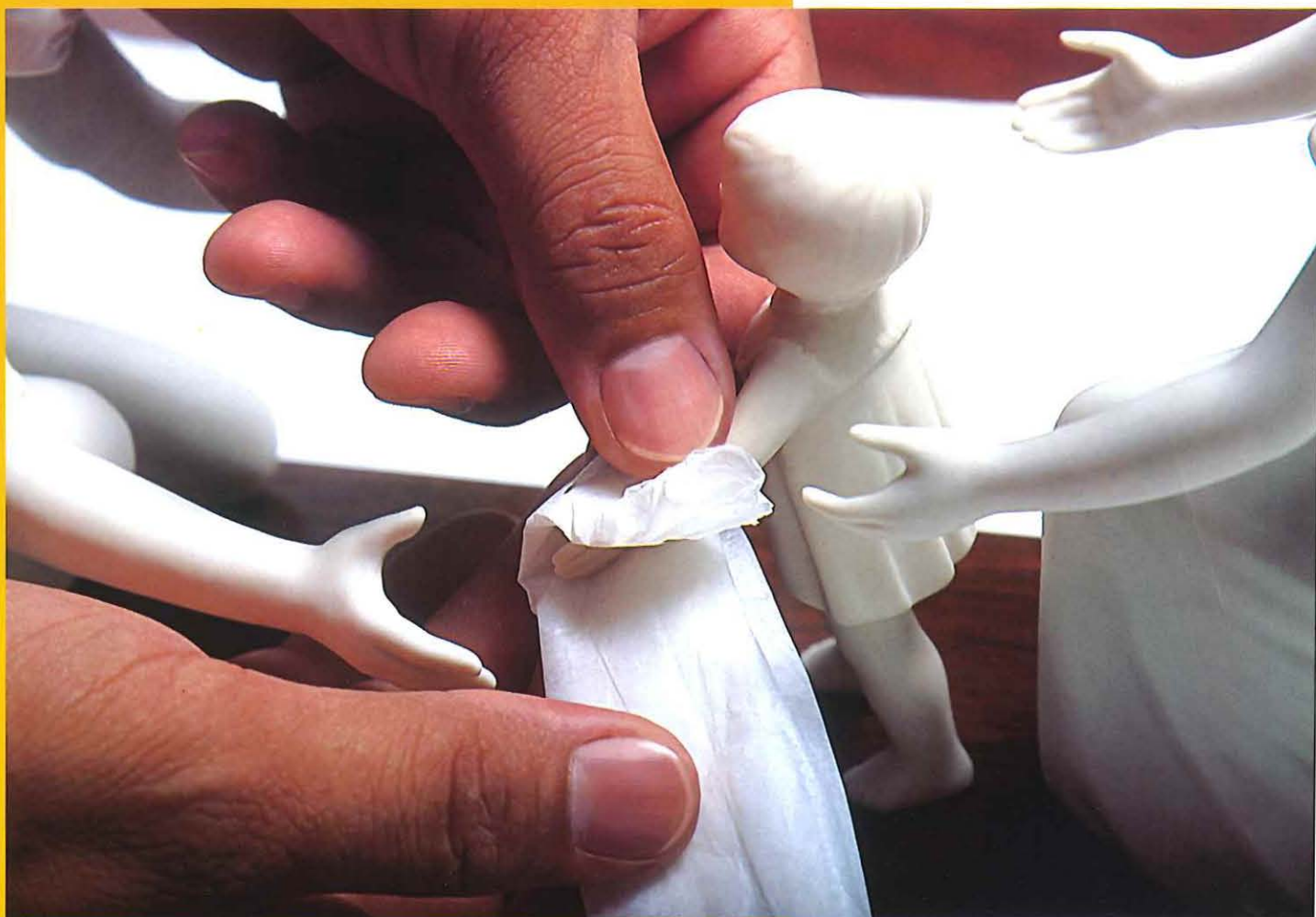
GOODBYES

MRS. SURINDA MORGAN
 CHUMRAT & DENISE PRICHTKUL
 JOSE & TANIA TEKERA
 TREVOR BUCHINSKI
 JAMES & SAOWAROT LANE
 SIMON & SHIRI CHICK
 YANG & CHOMBHUNUCH MOH
 RICHARD & UTE MCHOWAT
 LAURIE & MARIE WILSON
 BRIAN & WULANDARI



Put yourself in our hands

At Transpo, caring is what it is all about.



THE smallest things can make the biggest difference. Transpo has spent over 25 years in Thailand building a reputation for confident handling of the most delicate concerns. This means you can relax, knowing we won't break your trust – or anything else, for that matter.

Because when it comes to caring, we've got it all wrapped up.

Transpo International Ltd.
134/28-32 Soi Athakrabi 3, Rama IV, Bangkok 10110, Thailand
Tel: (66-2) 259-0116 ext. 222 · Fax: (66-2) 258-6555
E-mail: info@transpo-intl.com · Website: www.transpo-intl.com

Cambodia · China · Hong Kong · Indonesia · Japan · Laos · Malaysia · Philippines · Singapore · South Korea · Thailand · Vietnam

national airline



national pride

Now Sri Lankans have another reason to be proud. Our national airline's state-of-the-art all-Airbus fleet flies from Colombo to 29 international destinations. Each seat has its own phone and a personal TV featuring the very best in Sri Lankan movies, music and sports. And our new menu offers a selection of irresistible international dishes, including a wide variety of delicious home-cooked favourites. All served with the warmth and personal care that our nation is renowned for.

national treasure



For more information
please contact
SriLankan Airlines Limited
G/FL, 942/33-35 Charn Issara Tower,
Rama IV Road, Silom,
Bangrak, Bangkok 10500

Sales: Tel 02 236-8451
Fax 02 236-8456
Email: bkksales@srilankan.lk

Tktg & Rsvn: Tel 02 236-8450
Fax 02 236-8456
Email: bkktkt-rsvn@srilankan.lk

